

**CHOICE SCHOLARSHIP PROGRAM ANNUAL REPORT:
PARTICIPATION AND PAYMENT DATA
2011-2012, 2012-2013 & 2013-2014**

**PREPARED BY
THE INDIANA DEPARTMENT OF EDUCATION
OFFICE OF SCHOOL FINANCE**

JANUARY 27, 2014

Table of Contents

INDIANA SCHOOL CHOICE SCHOLARSHIP PROGRAM HISTORY	3
ELIGIBILITY	3
STUDENT ELIGIBILITY CRITERIA	3
INCOME ELIGIBILITY CRITERIA.....	5
PARTICIPATION	6
STUDENT AND SCHOOL PARTICIPATION.....	6
PARTICIPATION BY GRADE LEVEL.....	7
PARTICIPATION BY GENDER	9
PARTICIPATION BY ETHNICITY.....	9
PARTICIPATION BY GEOGRAPHIC AREA.....	10
PATHWAYS.....	11
PARTICIPATION BY PATHWAY.....	11
PARTICIPATION BY PRIOR INDIANA PUBLIC SCHOOL ATTENDANCE	13
PARTICIPATION BY PATHWAY AND PRIOR INDIANA PUBLIC SCHOOL ATTENDANCE 2013-2014.....	14
PARTICIPATION BY EXPANDED PATHWAY ELIGIBILITY.....	15
RETENTION	15
PARTICIPANT RETENTION DURING THE SCHOOL YEAR.....	15
PARTICIPANT RETENTION BETWEEN SCHOOL YEARS	16
AWARDS	16
CALCULATION OF AWARD AMOUNT	16
AWARDS BY TYPE.....	17
AVERAGE AWARD AMOUNT.....	18
AWARDS BY SCHOOL CORPORATION OF LEGAL SETTLEMENT	18
AWARDS BY PARTICIPATING CHOICE SCHOOL	20
CHOICE SCHOLARSHIP PAYMENTS	20
CHOICE SAVINGS SPECIAL DISTRIBUTION	21
ADDITIONAL INFORMATION	22
APPENDIX A:CHOICE SCHOLARSHIP STUDENTS BY SCHOOL CORPORATION OF LEGAL SETTLEMENT	23
APPENDIX B:CHOICE SCHOLARSHIP STUDENT COUNT BY SCHOOL CHOICE SCHOOL	31
APPENDIX C:CHOICE SCHOLARSHIP AWARD AMOUNTS BY CHOICE SCHOOL	39

INDIANA SCHOOL CHOICE SCHOLARSHIP PROGRAM HISTORY

This report provides an overview of the Indiana Choice Scholarship Program, which was passed as part of House Enrolled Act 1003-2011(Public Law 92-2011) and provides Choice Scholarships to students in households that meet income and eligibility requirements. The program provides funds to assist with the payment of tuition and fees at a participating Choice School.

For the 2011-2012 school year, Choice Scholarships were limited to 7,500 students. For the 2012-2013 school year, Choice Scholarships were limited to 15,000 students. Lastly, for the 2013-2014 school year, the student cap was removed and Choice Scholarships were available to any student that met eligibility and income requirements. During the 2013 Session of the Indiana General Assembly, the program was further expanded to include eligibility components related to special education, siblings, and failing schools.

Information on the School Choice Program may be found in I.C. 20-51, 512 IAC 3, and 512 IAC 4 or by accessing information on the Indiana Department of Education (IDOE) website at the following link <http://www.doe.in.gov/choice>.

ELIGIBILITY

To participate in the Choice Scholarship Program a student must satisfy income and eligibility requirements.

STUDENT ELIGIBILITY CRITERIA

There are three initial requirements that all students must satisfy:

1. Have legal settlement in Indiana;
2. Be between the ages of 5 and 22 no later than August 1 of the school year; and
3. Be accepted for enrollment into a participating Choice Scholarship school;

After satisfying the three initial requirements listed above, a student must satisfy the requirements for one of the eligibility pathways.

For the 2011-2012 school year, there were two eligibility pathways.

1. **Two-Semesters in Public School Pathway**

- a. The student was enrolled in 1st through 12th grade in a public school, including a charter school, in Indiana for at least two semesters immediately preceding the first semester for which the individual receives a Choice Scholarship.
- b. Beginning with the 2013-2014 school year, kindergarten attendance could satisfy the two semesters in public school requirement.
- c. The student is a member of a household with an annual income equal to or below 150% of the amount to qualify for the federal free or reduced lunch program.

2. Previous Scholarship Granting Organization (SGO) Award Pathway

- a. The student received an SGO Scholarship in a preceding school year, including a school year that does not immediately precede the school year for which the student is applying for a Choice Scholarship.
- b. The five approved Scholarship Granting Organizations (SGOs) are:
 - ☐ Educational Choice Charitable Trust
 - ☐ School Scholarship Granting Organization of Northeast Indiana
 - ☐ Tuition Assistance Fund of Southwestern Indiana
 - ☐ Sagamore Institute Scholarships for Education Choice
 - ☐ The Lutheran Scholarship Granting Organization of Indiana
- c. The student is a member of a household with an annual income equal to or below 150% of the amount to qualify for the federal free or reduced lunch program.

For the 2012-2013 school year, a third pathway, the Previous Choice Scholarship Student Pathway, became applicable. The Previous Choice Scholarship Student Pathway was written into the original statute. However, because the 2011-2012 school year was the first year of the Choice Scholarship Program, no students could have met the criteria for this pathway prior to the 2012-2013 school year.

3. Previous Choice Scholarship Student Pathway

- a. **2012-2013 School Year**
 - ☐ The student received a Choice Scholarship in the previous school year.
- b. **2013-2014 School Year**
 - ☐ The student received a Choice Scholarship in a school year that does not immediately precede the school year for which the student is applying for a Choice Scholarship; or
 - ☐ The student received a Choice Scholarship in the immediately preceding school year but the student exited the Choice School prior to the end of the school year.
- c. The student is a member of a household with an annual income equal to or below 150% of the amount to qualify for the federal free or reduced lunch program.

For the 2013-2014 school year legislative changes in House Enrolled Act 1003 increased the number of eligibility pathways to seven.

4. Continuing Choice Scholarship Student Pathway

- a. The student received a Choice Scholarship in the school year that immediately precedes the school year for which the student is applying for a Choice Scholarship.
- b. The student is required to have remained enrolled at the Choice School for the entirety of the immediately preceding school year.
- c. The student is a member of a household with an annual income equal to or below 200% of the amount to qualify for the federal free or reduced lunch program.

5. **Special Education Pathway**

- a. The student has a disability that requires special education.
- b. An individualized education program (IEP) pursuant to IC 20-35 or a service plan pursuant to 511 IAC 7-34 has been developed for the student.
- c. The student is a member of a household with an annual income equal to or below 200% of the amount to qualify for the federal free or reduced lunch program.

6. **“F” Public School Pathway**

- a. The student would be required to attend a specific public school based on their residence that has been assigned an “F” grade.
- b. This pathway does not require prior attendance at the school.
- c. The student is a member of a household with an annual income equal to or below 150% of the amount to qualify for the federal free or reduced lunch program.

7. **Sibling Pathway**

- a. The sibling of the newly applying student received either a Choice Scholarship or an SGO scholarship in a preceding school year, including a school year that does not immediately precede the school year for which the student is applying for a Choice Scholarship.
- b. For purposes of the Choice Scholarship Program, the term “sibling” shall mean one of two or more individuals having one or both parents, guardians or custodians in common. The term does not require a consanguineous (blood) relationship between the individuals.
- c. The student is a member of a household with an annual income equal to or below 150% of the amount to qualify for the federal free or reduced lunch program.

INCOME ELIGIBILITY CRITERIA

The income criteria to participate in the Choice Scholarship Program are linked to the federal free or reduced lunch program income guidelines. In order to qualify for the larger, 90% Choice Scholarship award, a student must be a member of a household with an annual income equal to or below 100% of the amount to qualify for the federal free or reduced lunch program. To qualify for the smaller, 50% award, the student must be a member of a household with an annual income equal to or below 150% of the amount to qualify for the federal free or reduced lunch program.

Beginning with the 2013-2014 school year, income eligibility for the 50% award was expanded to 200% of the amount to qualify for the federal free or reduced lunch program for students qualifying under the Continuing Choice and Special Education Pathways.

Table 1. Choice Scholarship Program Income Limits by Household Size 2013-2014

	100% of Reduced Lunch Eligibility	150% of Reduced Lunch Eligibility	200% of Reduced Lunch Eligibility
Persons in Household	Annual household income limit for a "90%" Choice Scholarship*	Annual household income limit for a "50%" Choice Scholarship**	Annual household income limit for a "50%" Choice Scholarship***
1	\$ 21,257	\$ 31,885	\$ 42,513
2	\$ 28,694	\$ 43,041	\$ 57,387
3	\$ 36,131	\$ 54,196	\$ 72,261
4	\$ 43,568	\$ 65,352	\$ 87,135
5	\$ 51,005	\$ 76,507	\$ 102,009
6	\$ 58,442	\$ 87,663	\$ 116,883
7	\$ 65,879	\$ 98,818	\$ 131,757
8	\$ 73,316	\$ 109,974	\$ 146,631
* For a household size of nine (9) or more, add \$7,437 to the annual limit for each additional member (or \$620 to the monthly limit) for a "90%" scholarship. ** Add \$11,156 to the annual limit (\$930 monthly) for each additional member for a "50%" scholarship. *** Add \$14,874 to the annual limit (\$1,240 monthly) for each additional member for a "50%" scholarship.			

PARTICIPATION

STUDENT AND SCHOOL PARTICIPATION

In 2011-2012, the first year of the Choice Scholarship Program, 3,911 students and 241 schools participated. This increased to 9,139 students and 289 schools for the 2012-2013 school year and 19,809 students and 313 schools for the 2013-2014 school year. Tables 2 and 3 below show the growth in student and school participation over the first three years of the program.

Table 2. Student Program Participation

	2011-2012	2012-2013	2013-2014
Student Count	3,911	9,139	19,809
Change from Previous Year	N/A	5,228	10,670
Percentage Change from Previous Year	N/A	133.7%	116.8%

Table 3. School Program Participation

	2011-2012	2012-2013	2013-2014
School Count	241	289	313
Change from Previous Year	N/A	48	24
Percentage Change from Previous Year	N/A	19.9%	8.3%

Statewide student enrollment counts by school type are provided in Table 4 below. Choice Scholarship students have increased from 0.4% of total student enrollment in the 2011-2012 school year to 1.8% in the 2013-2014 school year.

Table 4. Statewide Student Enrollment by School Type						
	2011-2012	Percent	2012-2013	Percent	2013-2014	Percent
Traditional Public	1,013,323	90.9%	1,007,529	89.8%	1,011,767	89.5%
Public Charter	28,279	2.5%	33,782	3.0%	35,678	3.1%
Non-Public (Excluding Choice Students)*	68,686	6.2%	71,415	6.4%	62,999	5.6%
Choice	3,911	0.4%	9,139	0.8%	19,809	1.8%
Total	1,114,199	100%	1,121,865	100%	1,130,253	100%
* Includes only accredited non-public schools that report to the Indiana Department of Education.						

PARTICIPATION BY GRADE LEVEL

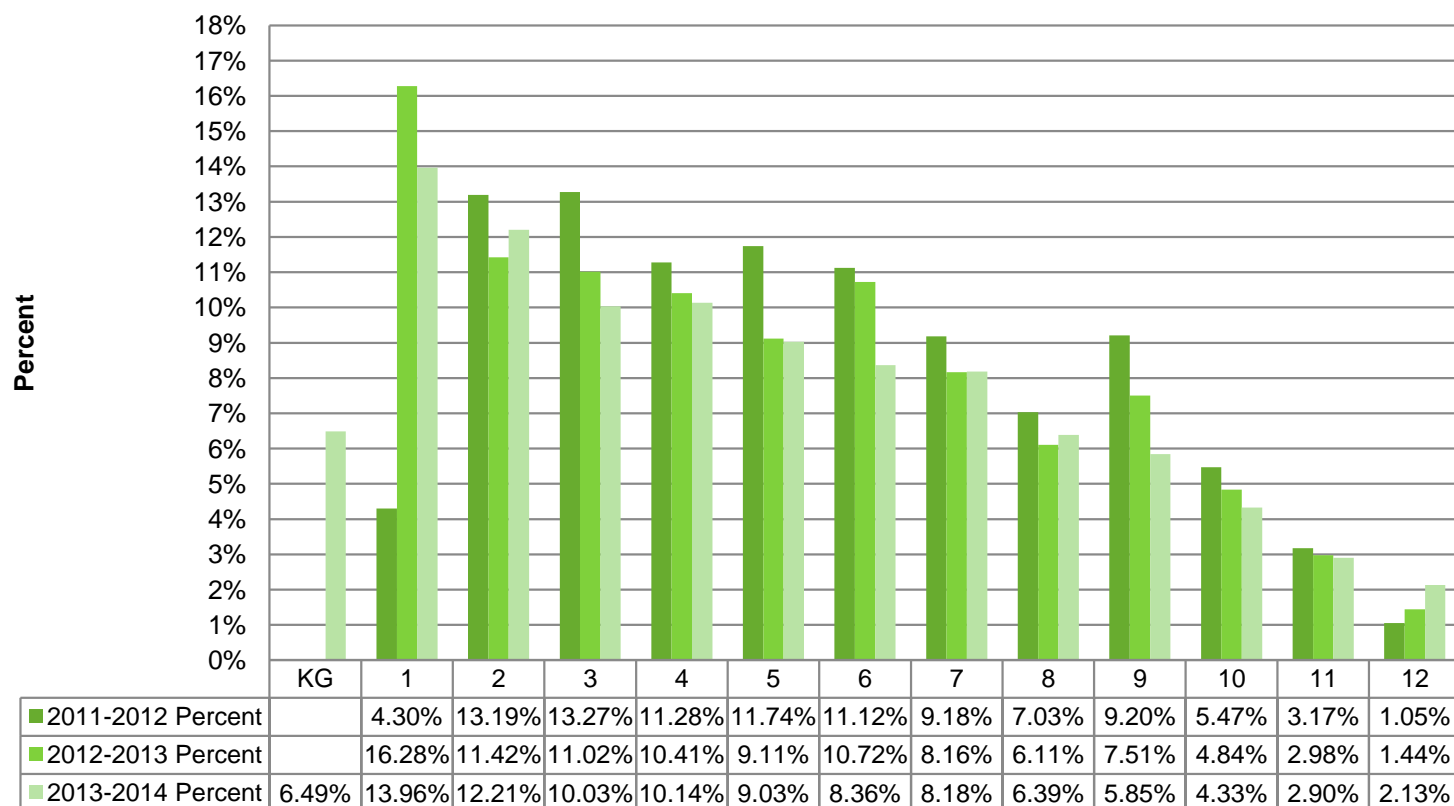
For the first two years of the Choice Scholarship Program students in grades 1 through 12 were eligible to participate. Beginning with the 2013-2014 school year kindergarten students were eligible to participate. Table 5 below illustrates program participation by grade level cluster.

Table 5. Participation by Grade Level Cluster						
	2011-2012	Percent	2012-2013	Percent	2013-2014	Percent
Kindergarten	N/A		N/A		1,285	6.5%
Grade 1-8	3,172	81.1%	7,607	83.2%	15,512	78.3%
Grade 9-12	739	18.9%	1,532	16.8%	3,012	15.2%
Total	3,911	100%	9,139	100%	19,809	100%

The count of program participants by grade level, as well as the percent each grade level accounted for in terms of program enrollment in each year are detailed in Table 6.

Table 6. Participation by Grade Level						
Grade	2011-2012	Percent	2012-2013	Percent	2013-2014	Percent
KG	N/A	N/A	N/A	N/A	1,285	6.49%
1	168	4.30%	1,488	16.28%	2,766	13.96%
2	516	13.19%	1,044	11.42%	2,418	12.21%
3	519	13.27%	1,007	11.02%	1,987	10.03%
4	441	11.28%	951	10.41%	2,008	10.14%
5	459	11.74%	833	9.11%	1,789	9.03%
6	435	11.12%	980	10.72%	1,657	8.36%
7	359	9.18%	746	8.16%	1,621	8.18%
8	275	7.03%	558	6.11%	1,266	6.39%
9	360	9.20%	686	7.51%	1,158	5.85%
10	214	5.47%	442	4.84%	857	4.33%
11	124	3.17%	272	2.98%	575	2.90%
12	41	1.05%	132	1.44%	422	2.13%
Total	3,911	100%	9,139	100%	19,809	100%

Percent Participation by Grade Level



PARTICIPATION BY GENDER

Table 7 provides data on the gender of participating Choice Scholarship students in each of the first three years of the program. In each year of the program slightly more female students have participated than male students.

Table 7. Gender						
	2011-2012	Percent	2012-2013	Percent	2013-2014	Percent
Female	1,988	50.8%	4,639	50.8%	9,954	50.2%
Male	1,923	49.2%	4,500	49.2%	9,855	49.8%
Total	3,911	100%	9,139	100%	19,809	100%

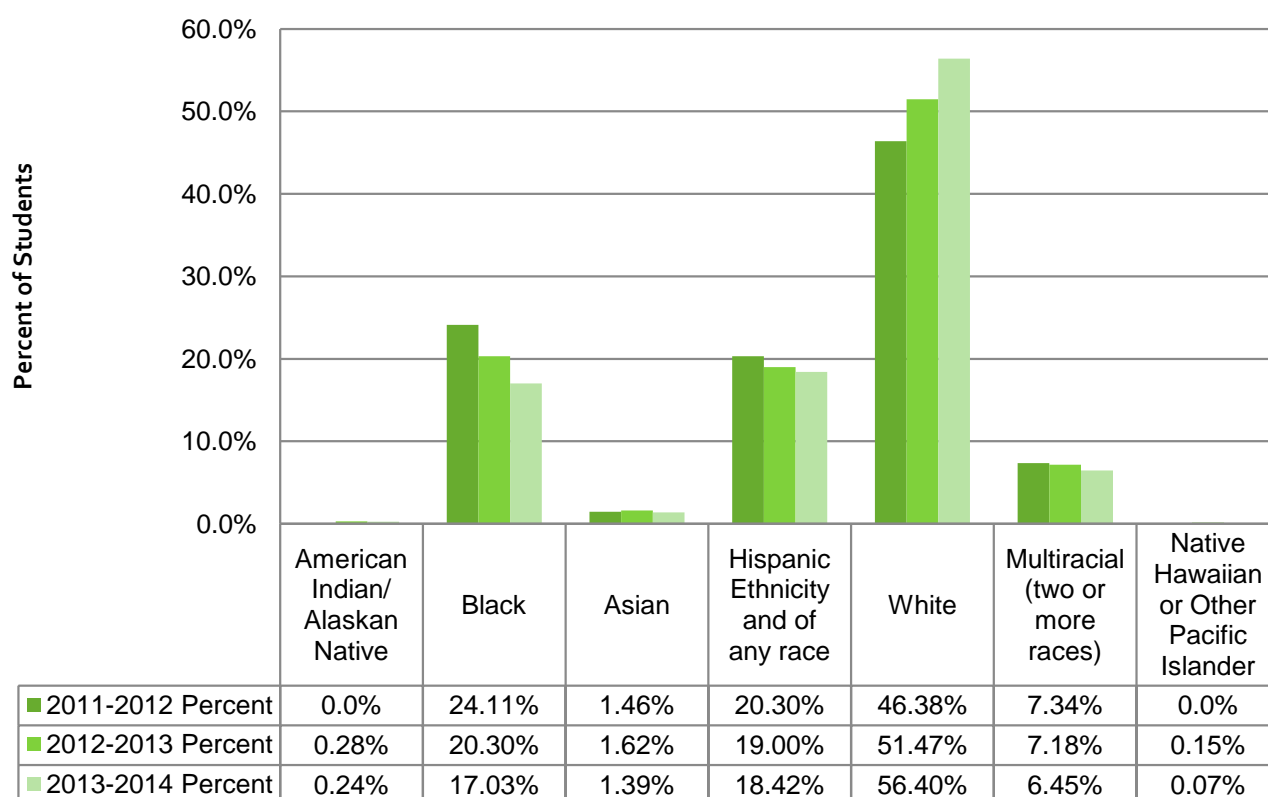
PARTICIPATION BY ETHNICITY

Table 8 below details the reported ethnicity of Choice Scholarship students.

Table 8. Ethnicity						
	2011-2012	Percent	2012-2013	Percent	2013-2014	Percent
American Indian/ Alaskan Native	*	*	26	0.28%	48	0.24%
Black	943	24.11%	1,855	20.30%	3,373	17.03%
Asian	57	1.46%	148	1.62%	275	1.39%
Hispanic Ethnicity and of any race	794	20.30%	1,736	19.00%	3,648	18.42%
White	1,814	46.38%	4,704	51.47%	11,173	56.40%
Multiracial (two or more races)	287	7.34%	656	7.18%	1,277	6.45%
Native Hawaiian or Other Pacific Islander	*	*	14	0.15%	15	0.07%
Total	3,911	100%	9,139	100%	19,809	100%
* Values have been asterisked to comply with the Family Educational Rights and Privacy Act of 1974 (FERPA), which prohibits the public disclosure of student level data. If a subset includes fewer than 10 students, the actual number may not be reported. Values may be asterisked if their inclusion would allow for student level counts of less than 10 to be deduced.						

The participation of white students as a percentage of total program participants has increased in each of the three years of the program. The participation of students in all other ethnicity categories as a percentage of total program participants decreased between the 2012-2013 and 2013-2014 school years.

Percent Participation by Ethnicity 2013-2014

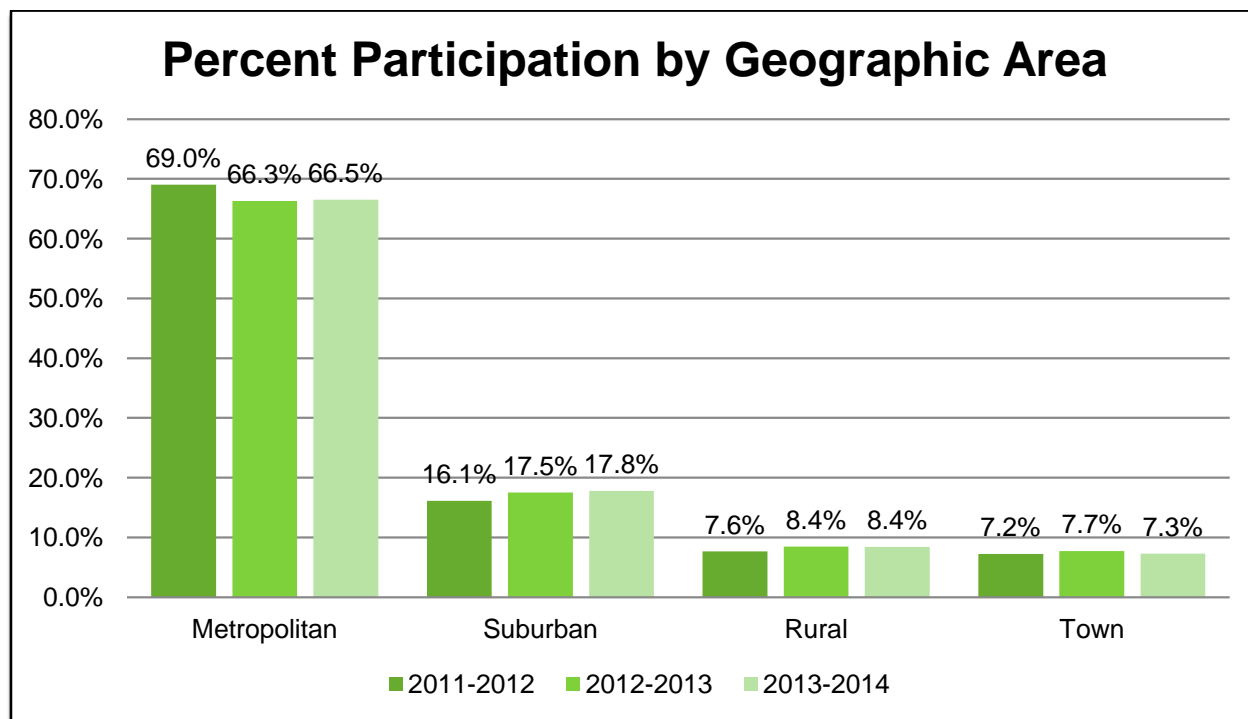


PARTICIPATION BY GEOGRAPHIC AREA

Each school corporation in Indiana is categorized as one of four geographic types- metropolitan, suburban, rural, or town. The geographic type of the school corporation of legal settlement is used to determine the geographic area of each student participating in the Choice Scholarship Program. As illustrated in Table 9 below, the percentage distribution of students by geographic area category has remained relatively constant across the three years of the program.

Table 9. Participation by Geographic Area						
	2011-2012	Percent	2012-2013	Percent	2013-2014	Percent
Metropolitan	2,699	69.0%	6,061	66.3%	13,175	66.5%
Suburban	630	16.1%	1,601	17.5%	3,525	17.8%
Rural	299	7.6%	772	8.5%	1,669	8.4%
Town	283	7.2%	705	7.7%	1,440	7.3%
Total	3,911	100%	9,139	100%	19,809	100%

The majority of Choice Scholarship students, 66.5% in 2013-2014, come from metropolitan areas.



Pathways

PARTICIPATION BY PATHWAY

For the 2011-2012 and 2012-2013 school years, there were three pathways to student eligibility. The first pathway is for a student to have spent the two semesters preceding the receipt of a Choice Scholarship in an Indiana public school. The second pathway is for a student to have received an award from an approved scholarship granting organization (SGO) through the School Scholarship Tax Credit Program in a previous school year. The third pathway, which became applicable for the 2012-2013 school year, is to have received a Choice Scholarship award in a previous year.

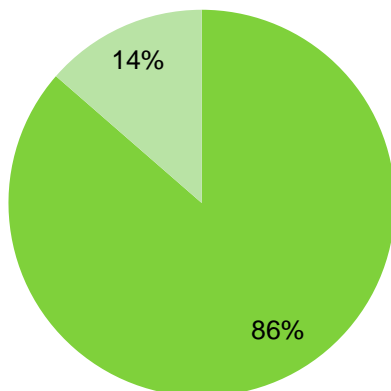
Table 10 below illustrates participation by student type for the 2011-2012 and 2012-2013 school years.

Table 10. Participation by Student Type 2011-2012 and 2012-2013				
	2011-2012	2012-2013	Change	% Change
Previous Choice Students	N/A	2,958		
Two-Semesters in Public School Students	3,379	4,209	830	24.6%
Previous SGO Award Students	532	1,972	1,440	270.7%
Total	3,911	9,139	5,228	133.7%

For the 2012-2013 school year, 2,958 of the students who participated in 2011-2012 continued in the program, while 6,181 students were new to the Choice Scholarship Program. Of these students new to the Choice Scholarship Program, 1,972 students previously received awards through Scholarship Granting Organizations (SGOs) and 4,209 students were eligible based on their prior enrollment in an Indiana public school.

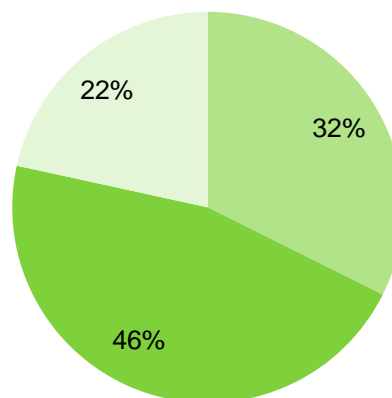
2011-2012 Participation by Student Type

- Two-Semester in Public School Students
- Previous SGO Award Students



2012-2013 Participation by Student Type

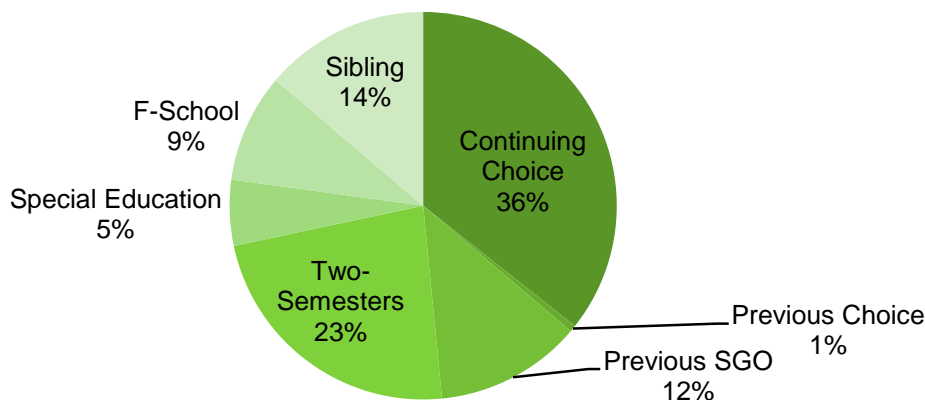
- Previous Choice Students
- Two-Semester in Public School Students
- Previous SGO Award Students



For the 2013-2014 school year, student eligibility criteria for the Choice Scholarship Program was expanded to include seven different pathways to eligibility. Table 11 below depicts the pathway selected at the time of student application. It is possible that a student could satisfy the eligibility criteria of more than one pathway.

Table 11. Participation by Pathway 2013-2014		
Pathway	Student Count	Percent
Continuing Choice	7,066	35.67%
Previous Choice	108	0.54%
Previous SGO	2,423	12.23%
Two-Semesters in Public School	4,599	23.22%
Original Pathways	14,196	71.66%
Special Education	1,088	5.49%
F-School	1,796	9.07%
Sibling	2,729	13.78%
Expanded Pathways	5,613	28.34%
Total	19,809	100%

2013-2014 Participation by Pathway



There are two eligibility branches within the Sibling Pathway. A sibling of a student who received either a Choice Scholarship or an SGO award in a previous school year is eligible under the Sibling Pathway. As illustrated in Table 12 below, the majority, almost 60%, of students who applied under the Sibling Pathway were siblings of previous Choice Scholarship students.

Table 12. Sibling Pathway Participation

Sibling Pathway	Student Count	Percent
Previous Choice	1,629	59.7%
Previous SGO	1,100	40.3%
Total	2,729	100%

PARTICIPATION BY PRIOR INDIANA PUBLIC SCHOOL ATTENDANCE

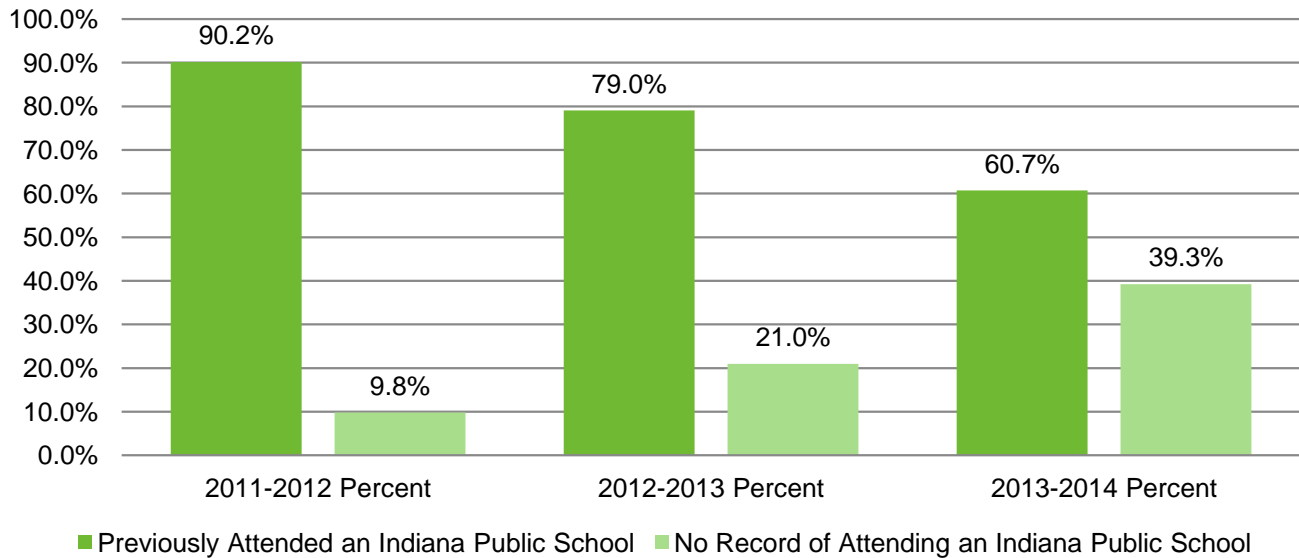
Table 13 below provides the count and percentage of Choice Scholarship students that attended an Indiana public school at any previous point in their educational history.

Table 13. Prior Indiana Public School Attendance of Choice Students by Year

	2011-2012	Percent	2012-2013	Percent	2013-2014	Percent
Previously Attended an Indiana Public School	3,526	90.2%	7,223	79.0%	12,030	60.7%
No Record of Attending an Indiana Public School	385	9.8%	1,916	21.0%	7,779	39.3%
Total Choice Students	3,911	100%	9,139	100%	19,809	100%

In each subsequent year of the Choice Scholarship Program, the percentage of Choice students that attended an Indiana public school at any previous point in their educational history has decreased.

Prior Indiana Public School Attendance of Choice Students



PARTICIPATION BY PATHWAY AND PRIOR INDIANA PUBLIC SCHOOL ATTENDANCE 2013-2014

Of the 19,809 students participating in the 2013-2014 Choice Scholarship Program, 7,174 previously received a Choice Scholarship and were eligible through either the Continuing or Previous Choice Pathways. For the other 12,635 students in the program, 4,599 applied through the two-semesters in public school pathway. The remaining 8,036 students applied under the F-School, Previous SGO, Sibling, and Special Education Pathways. Each of these pathways does not require prior Indiana public school attendance. Table 14 below illustrates whether each student who applied under one of these pathways had attended an Indiana public school at any previous point in their educational history.

Table 14. New Choice Students for 2013-2014 and Indiana Public School Attendance by Pathway

Pathway	Count	Attended an Indiana Public School	Percent	No Record of Attending an Indiana Public School	Percent
F School	1,796	522	29.1%	1,274	70.9%
Previous SGO	2,423	640	26.4%	1,783	73.6%
Sibling	2,729	560	20.5%	2,169	79.5%
Special Ed	1,088	777	71.4%	311	28.6%
Total	8,036	2,499	31.1%	5,537	68.9%

PARTICIPATION BY EXPANDED PATHWAY ELIGIBILITY

As previously mentioned, students may satisfy the eligibility criteria of more than one pathway. Table 15 below shows the count of students by the expanded pathways introduced for the 2013-2014 school year and whether students who submitted applications under each pathway would have satisfied the eligibility criteria of the Two-Semesters in Public School Pathway.

Table 15. Expanded Pathway Eligibility					
Pathway	Count	Eligible Under Two Semesters Pathway	Percent	Not Eligible Under Two Semesters Pathway	Percent
F School	1,796	149	8.3%	1,647	91.7%
Sibling	2,729	80	2.9%	2,649	97.1%
Special Ed	1,088	159	14.6%	929	85.4%
Total	5,613	388	6.9%	5,225	93.1%

Of the students who submitted applications under one of the expansion pathways, 5,225 would not have satisfied the Two-Semesters in Public School Pathway Criteria. It is possible that some students who submitted applications under the expansion pathways could have previously received an SGO award and would have been eligible under the Previous SGO Award Pathway.

Retention

PARTICIPANT RETENTION DURING THE SCHOOL YEAR

Participating Choice Schools are required to report a Choice Scholarship student who withdraws from the Choice School to the Department of Education within five days of the student's exit date. Table 16 below provides the count and percentage of students who exited their Choice School prior to the last day of school.

Table 16. Count of students who exited their Choice School prior to the last day of school			
Year	Total Count	Count who Exited	Percent
2011-2012	3,911	348	8.9%
2012-2013	9,139	643	7.0%

Over 90% of Choice Scholarship students completed the full school year at the Choice School in each of the first two years of the program.

PARTICIPANT RETENTION BETWEEN SCHOOL YEARS

Table 17 below illustrates student retention in the Choice Scholarship Program between school years. Of the 3,911 Choice Scholarship students that participated in the 2011-2012 program, 2,958 or 75.6%, of those students participated again in the 2012-2013 school year. For the 2013-2014 school year, 7,147 students were Continuing or Previous Choice Scholarship students. Of the 108 Previous Choice students, 44 participated during the 2011-2012 school year, but not the 2012-2013 school year. Of the 9,139 students who participated in the 2012-2013 school year, 7,103, or 77.7% of those students participated again in the 2013-2014 school year.

Table 17. Student Retention Between Years			
	2011-2012	2012-2013	2013-2014
Total Students	3,911	9,139	19,809
Count of Choice Students that Participated the Previous Year	N/A	2,958	7,103
Count of Choice Students that Did Not Participate the Previous Year*	N/A	6,181	12,706
Percent of Choice Students Retained in the Program from the Previous Year	N/A	75.6%	77.7%

* For the 2013-2014 school year, this count includes students who participated in 2011-2012 but not 2012-2013.

AWARDS

CALCULATION OF AWARD AMOUNT

For the 2013-2014 school year, the value of the Choice Scholarship is the lesser of three amounts:

- 1) Tuition and fees charged to the student at the eligible school;
- 2) \$4,700 for grades 1-8; or,
- 3) An amount based off the per-student state funding for the student's school corporation of residence, determined as follows:
 - **90%** of the funding formula amount if household income is up to 100% of Reduced Lunch eligibility.
 - **50%** of formula amount if household income is up to 150% of Reduced Lunch.
 - **50%** of formula amount if household income is up to 200% of Reduced Lunch eligibility if the student received a Choice Scholarship for the 2012-2013 school year **OR** if the student has a disability that requires special education.

The 90% and 50% award amount calculations based on the per-student state funding amount by school corporation of residence for the 2013-2014 school year are posted at: <http://www.doe.in.gov/choice>.

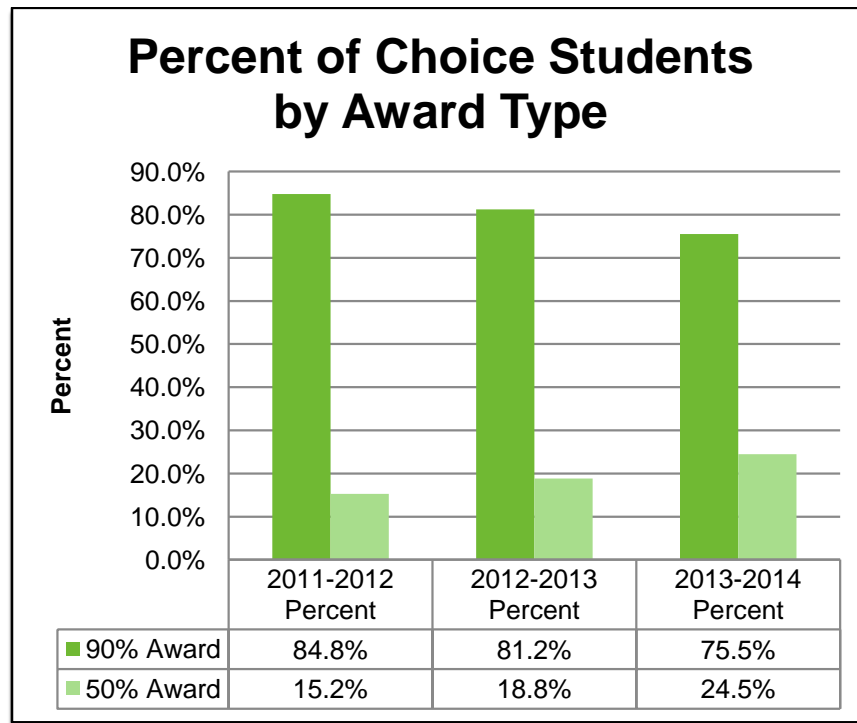
AWARDS BY TYPE

Table 18 below illustrates the breakdown of awards by the count and percentage of students qualifying for 90% and 50% award amounts.

Table 18. Awards by Type						
	2011-2012	Percent	2012-2013	Percent	2013-2014	Percent
90% Award	3,315	84.8%	7,420	81.2%	14,960	75.5%
50% Award	596	15.2%	1,719	18.8%	4,849	24.5%
Total	3,911	100%	9,139	100%	19,809	100%

For the 2013-2014 school year, 75.5% of participating students met the income criteria for the federal free or reduced lunch program and qualified for a 90% award scholarship. This is down from the 2012-2013 school year when 81.2% of students qualified for the 90% award. In 2013-2014, 24.5% of students met the income guidelines to qualify for a 50% scholarship award compared to 18.8% in 2012-2013.

As illustrated in the graph below, in each subsequent year of the Choice Scholarship Program, the percentage of students receiving the 90% award has decreased and the percentage of students receiving the 50% award has increased.



Beginning with the 2013-2014 school year, to qualify for the 50% Choice award, students eligible under the Continuing Choice Scholarship Student or Special Education Pathways are subject to an income cut off of 200% of the amount to qualify for the federal free or reduced lunch program. Students qualifying under all other pathways are subject to an income cut off of 150% of the amount to qualify for the federal free or reduced lunch program.

Table 19 below provides the breakdown by income category of the 50% award recipients under the Continuing Choice Student and Special Education Pathways. Of the 2,063 students who qualified for a 50% Choice Scholarship under the Continuing Choice Student or Special Education Pathways, 492 or 23.8%, of these students qualified under the expanded income bracket of 150% to 200% of the amount to qualify for the federal free or reduced lunch program. In addition, 76.2% of these students met the original income cut off of 150% of the amount to qualify for the federal free or reduced lunch program.

Table 19. Income of Continuing Choice and Special Education Pathway 50% Award Recipients		
Income Cut Off	Count	Percent
150% Income Level	1,571	76.2%
150%-200% Income Level	492	23.8%
Total	2,063	100%

AVERAGE AWARD AMOUNT

Table 20 below details the average award amount of a Choice Scholarship student by grade cluster (K, 1-8, and 9-12) and award type (90% or 50%). The average amount of a 90% award has increased across all grade clusters in each subsequent year of the program. The average amount of a 50% award decreased between the first and second years of the program but increased between the second and third years of the program.

Table 20. Average Award Amount by Grade Cluster and Award Type						
	2011-2012	Change From Previous Year	2012-2013	Change From Previous Year	2013-2014	Change From Previous Year
Kindergarten						
90%	N/A	N/A	N/A	N/A	\$ 4,474.30	N/A
50%	N/A	N/A	N/A	N/A	\$ 2,856.82	N/A
Grade 1-8						
90%	\$ 4,105.12	N/A	\$ 4,125.49	\$ 20.37	\$ 4,209.23	\$ 83.74
50%	\$ 2,928.19	N/A	\$ 2,862.13	\$ (66.06)	\$ 2,880.11	\$ 17.98
Grade 9-12						
90%	\$ 5,518.32	N/A	\$ 5,551.49	\$ 33.17	\$ 5,806.84	\$ 255.35
50%	\$ 2,953.76	N/A	\$ 2,937.16	\$ (16.60)	\$ 3,162.01	\$ 224.85

AWARDS BY SCHOOL CORPORATION OF LEGAL SETTLEMENT

Table 21 provides the count of school corporations in each of the three years of the program where Choice students had legal settlement. As the count of Choice students has increased in each year of the program, so has the count of school corporations that participating students reside in. The Choice student count by corporation of legal settlement for each year of the program is provided in Appendix A. Please note that students may not have attended a public school in their corporation of legal settlement prior to participating in the Choice Scholarship Program.

Table 21. Count of School Corporations of Legal Settlement of Choice Students			
	2011-2012	2012-2013	2013-2014
Corporations of Legal Settlement	184	214	238
Change From Previous Year	N/A	30	24
Percentage Change From Previous Year	N/A	16.3%	11.2%

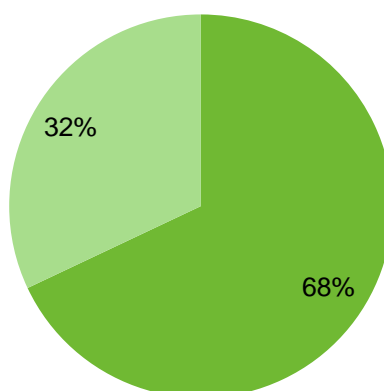
Choice Scholarship students may apply for and use the award at any participating Choice School. Table 22 below shows the count and percentage of Choice Scholarship students that used their award to attend a Choice School located within or outside of the boundaries of student's school corporation of legal settlement.

Table 22. Use of Choice Awards at Schools In or Outside of Student's Corporation of Legal Settlement						
	2011-2012	Percent	2012-2013	Percent	2013-2014	Percent
Award Used at a Choice School Located In Student's Corporation of Legal Settlement	2,677	68.4%	6,312	69.1%	13,465	68.0%
Award Used at a Choice School Located Outside Student's Corporation of Legal Settlement	1,234	31.6%	2,827	30.9%	6,344	32.0%
Total	3,911	100%	9,139	100%	19,809	100%

In each year of the program, just over two-thirds of Choice students attended a Choice School located within the boundaries of the student's school corporation of legal settlement. A list of Choice Scholarship student counts by participating Choice School is available in Appendix B.

2013-2014 Choice Awards at Schools In or Outside of Student's Corporation of Legal Settlement

- Award Used at a Choice School Located In Student's Corporation of Legal Settlement
- Award Used at a Choice School Located Outside Student's Corporation of Legal Settlement



AWARDS BY PARTICIPATING CHOICE SCHOOL

Table 23 below provides the total award amount all Choice Scholarship students were eligible to receive in each of the first three program years. A complete listing of the total eligible award amount by Choice School is provided in Appendix C.

Table 23. Eligible Award Amount			
	2011-2012	2012-2013	2013-2014
Choice School Count	241	289	313
Choice Student Count	3,911	9,139	19,809
Total Eligible Award Amount	\$ 16,207,912.47	\$ 37,317,881.25	\$ 81,066,786.44

CHOICE SCHOLARSHIP PAYMENTS

Choice Scholarship award payments are made to the Choice School on the student's behalf once each semester. The student (if 18 years of age or older) or the student's parent or guardian signs an endorsement form authorizing the Department of Education to disburse the scholarship funds directly to the school on the student's behalf.

IC 20-51-4-6 specifies, "(a) If an eligible choice scholarship student enrolls in an eligible school for less than an entire school year, the choice scholarship provided under this chapter for that school year shall be reduced on a prorated basis to reflect the shorter school term."

The payment and prorated refund amounts for the first two years of the Choice Scholarship Program are detailed in Table 24 below.

Table 24. Choice Scholarship Program Payments		
	2011-2012	2012-2013
Fall Semester	\$7,799,984.08	\$ 18,039,837.37
Spring Semester	\$7,869,787.65	\$ 18,290,329.20
Total Payments	\$15,669,771.73	\$ 36,330,166.57
Prorated Refunds	\$ 155,747.13	\$ 287,243.54
Net Payments	\$15,514,024.60	\$ 36,042,923.03

CHOICE SAVINGS SPECIAL DISTRIBUTION

The budget bill contained a noncode provision that requires the Department of Education to make a special distribution to each school corporation and charter school, excluding virtual charter schools, of the savings resulting from the Choice School Program implemented under Indiana Code 20-51-4. It provides that the distributions may only be made after review by the State Budget Committee and approval by the State Budget Agency.

The noncode provision requires that the funds be distributed based on a five-step formula.

STEP ONE: Determine the total amount distributed in the year to all individuals for a scholarship under the choice scholarship program described in IC 20-51-4.

STEP TWO: Determine the total amount of state tuition support that all school corporations and charter schools (other than virtual charter schools) would have received in the year if those individuals who received a scholarship and who were enrolled in a public school during the preceding two (2) semesters before first receiving the scholarship had instead remained enrolled in public schools and had not enrolled in private schools.

STEP THREE: Determine the result of:
(A) the STEP TWO result; minus
(B) the STEP ONE amount.

STEP FOUR: Determine each school corporation's percentage and each charter school's (other than a virtual charter school) percentage of the total state tuition support that will be distributed to school corporations and charter schools (other than virtual charter schools).

STEP FIVE: Multiply the result determined in STEP THREE by the school corporation's percentage or the charter school's (other than a virtual charter school) percentage determined under STEP FOUR.

The amount of the Choice Special Savings Distribution, as calculated by the five step formula above, for each of the first two years of the Choice Scholarship Program is provided in Table 25 below.

Table 25. Choice Special Savings Distribution		
	2011-2012	2012-2013
Choice Special Savings Distribution	\$ 4,180,383.77	\$4,904,497.03
Note: Data for the 2013-2014 school year will not be available until Spring 2014.		

ADDITIONAL INFORMATION

Data contained in this report was provided by Indiana Department of Education, Office of Information Services. Data sources used in this report include the STN Application Center, the State Aid Application Center, Choice Scholarship Student Applications, Choice School Applications, and the Federal Poverty Guidelines.

For additional information on the Choice Scholarship Program please visit our website at:
<http://www.doe.in.gov/choice>.

For questions concerning the Choice Scholarship Program, please email choiceschool@doe.in.gov.

APPENDIX A: CHOICE SCHOLARSHIP STUDENTS BY SCHOOL CORPORATION OF LEGAL SETTLEMENT

Appendix A: Choice Scholarship Students by School Corporation of Legal Settlement				
Note: Students may not have attended a public school in their corporation of legal settlement prior to participating in the Choice Scholarship Program.				
Corp. No.	Corporation Name	2011-2012	2012-2013	2013-2014
0015	Adams Central Community Schools	-	*	*
0025	North Adams Community Schools	*	37	106
0035	South Adams Schools	-	-	-
0125	M S D Southwest Allen County	13	43	107
0225	Northwest Allen County Schools	13	46	132
0235	Fort Wayne Community Schools	394	1,149	2,786
0255	East Allen County Schools	90	160	424
0365	Bartholomew Con School Corp	26	50	114
0370	Flat Rock-Hawcreek School Corp	*	*	15
0395	Benton Community School Corp	-	*	21
0515	Blackford County Schools	*	-	-
0615	Western Boone Co Com Sch Dist	-	-	-
0630	Zionsville Community Schools	*	12	21
0665	Lebanon Community School Corp	*	16	29
0670	Brown County School Corporation	*	*	*
0750	Carroll Consolidated Sch Corp	-	10	17
0755	Delphi Community School Corp	-	*	13
0775	Pioneer Regional School Corp	-	-	-
0815	Southeastern School Corp	-	-	*
0875	Logansport Community Sch Corp	*	20	45
0940	West Clark Community Schools	11	18	35
1000	Clarksville Com School Corp	*	16	29
1010	Greater Clark County Schools	25	70	161
1125	Clay Community Schools	*	*	11
1150	Clinton Central School Corp	-	-	*
1160	Clinton Prairie School Corp	-	-	*
1170	Community Schools of Frankfort	-	*	*
1180	Rossville Con School District	-	*	-
1300	Crawford Co Com School Corp	-	-	-
1315	Barr-Reeve Com Schools Inc	*	-	-
1375	North Daviess Com Schools	*	*	*
1405	Washington Com Schools	31	84	151
1560	Sunman-Dearborn Com Sch Corp	*	16	26
1600	South Dearborn Com School Corp	*	18	33
1620	Lawrenceburg Com School Corp	-	-	*
1655	Decatur County Com Schools	-	*	13
1730	Greensburg Community Schools	*	*	17

Appendix A: Choice Scholarship Students by School Corporation of Legal Settlement				
Note: Students may not have attended a public school in their corporation of legal settlement prior to participating in the Choice Scholarship Program.				
Corp. No.	Corporation Name	2011-2012	2012-2013	2013-2014
1805	DeKalb Co Eastern Com Sch Dist	*	*	10
1820	Garrett-Keyser-Butler Com	*	15	25
1835	DeKalb Co Ctl United Sch Dist	10	19	63
1875	Delaware Community School Corp	*	*	*
1885	Wes-Del Community Schools	-	-	*
1895	Liberty-Perry Com School Corp	*	*	*
1900	Cowan Community School Corp	-	-	*
1910	Yorktown Community Schools	*	-	13
1940	Daleville Community Schools	-	*	*
1970	Muncie Community Schools	19	53	100
2040	Northeast Dubois Co Sch Corp	*	*	-
2100	Southeast Dubois Co Sch Corp	-	*	*
2110	Southwest Dubois Co Sch Corp	-	-	-
2120	Greater Jasper Con Schs	*	16	39
2155	Fairfield Community Schools	*	*	23
2260	Baugo Community Schools	*	*	29
2270	Concord Community Schools	*	18	42
2275	Middlebury Community Schools	*	25	48
2285	Wa-Nee Community Schools	*	*	*
2305	Elkhart Community Schools	44	124	219
2315	Goshen Community Schools	19	66	140
2395	Fayette County School Corp	*	*	29
2400	New Albany-Floyd Co Con Sch	21	53	142
2435	Attica Consolidated Sch Corp	-	-	-
2440	Covington Community Sch Corp	*	*	27
2455	Southeast Fountain School Corp	*	*	-
2475	Franklin County Com Sch Corp	*	10	18
2645	Rochester Community Sch Corp	-	*	*
2650	Caston School Corporation	*	-	-
2725	East Gibson School Corporation	-	*	*
2735	North Gibson School Corp	*	10	32
2765	South Gibson School Corp	-	*	21
2815	Eastbrook Community Sch Corp	*	*	14
2825	Madison-Grant United Sch Corp	*	*	14
2855	Mississinewa Community School Corp	*	20	26
2865	Marion Community Schools	43	108	212
2920	Bloomfield School District	-	-	-
2940	Eastern Greene Schools	-	*	16
2950	Linton-Stockton School Corp	-	-	-
2960	M S D Shakamak Schools	-	-	-
2980	White River Valley Sch Dist	-	-	-

Appendix A: Choice Scholarship Students by School Corporation of Legal Settlement

Note: Students may not have attended a public school in their corporation of legal settlement prior to participating in the Choice Scholarship Program.

Corp. No.	Corporation Name	2011-2012	2012-2013	2013-2014
3005	Hamilton Southeastern Schools	18	54	119
3025	Hamilton Heights School Corp	-	*	*
3030	Westfield-Washington Schools	*	*	18
3055	Sheridan Community Schools	*	*	*
3060	Carmel Clay Schools	11	23	40
3070	Noblesville Schools	*	32	61
3115	Southern Hancock Co Com Sch Corp	*	*	13
3125	Greenfield-Central Com Schools	*	*	49
3135	Mt Vernon Community Sch Corp	*	*	10
3145	Eastern Hancock Co Com Sch Corp	-	-	-
3160	Lanesville Community School Corp	-	-	*
3180	North Harrison Com School Corp	-	-	-
3190	South Harrison Com Schools	-	*	26
3295	North West Hendricks Schools	*	*	15
3305	Brownsburg Community Sch Corp	15	37	95
3315	Avon Community School Corp	*	29	60
3325	Danville Community School Corp	*	*	*
3330	Plainfield Community Sch Corp	*	17	38
3335	Mill Creek Community Sch Corp	*	*	*
3405	Blue River Valley Schools	-	-	-
3415	South Henry School Corp	-	-	*
3435	Shenandoah School Corporation	*	*	*
3445	New Castle Community Sch Corp	*	*	-
3455	C A Beard Memorial School Corp	*	-	*
3460	Taylor Community School Corp	*	*	*
3470	Northwestern School Corp	-	*	*
3480	Eastern Howard School Corp	-	-	*
3490	Western School Corp	*	*	14
3500	Kokomo-Center Twp Con Sch Corp	-	17	63
3625	Huntington Co Com Sch Corp	24	41	77
3640	Medora Community School Corp	-	-	-
3675	Seymour Community Schools	10	18	47
3695	Brownstown Cnt Com Sch Corp	-	-	10
3710	Crothersville Community Schools	-	-	*
3785	Kankakee Valley School Corp	*	27	80
3815	Rensselaer Central School Corp	*	12	22
3945	Jay School Corp	18	31	59
3995	Madison Consolidated Schools	*	67	152
4000	Southwestern-Jefferson Co Con	*	15	22
4015	Jennings County Schools	*	18	68
4145	Clark-Pleasant Com School Corp	18	49	98

Appendix A: Choice Scholarship Students by School Corporation of Legal Settlement

Note: Students may not have attended a public school in their corporation of legal settlement prior to participating in the Choice Scholarship Program.

Corp. No.	Corporation Name	2011-2012	2012-2013	2013-2014
4205	Center Grove Com Sch Corp	12	34	73
4215	Edinburgh Community Sch Corp	*	-	*
4225	Franklin Community School Corp	*	29	62
4245	Greenwood Community Sch Corp	12	27	56
4255	Nineveh-Hensley-Jackson United	*	*	*
4315	North Knox School Corp	-	*	*
4325	South Knox School Corp	*	*	*
4335	Vincennes Community Sch Corp	*	19	52
4345	Wawasee Community School Corp	*	*	12
4415	Warsaw Community Schools	*	18	81
4445	Tippecanoe Valley School Corp	-	*	*
4455	Whitko Community School Corp	*	17	14
4515	Prairie Heights Com Sch Corp	-	*	*
4525	Westview School Corporation	-	-	-
4535	Lakeland School Corporation	-	*	*
4580	Hanover Community School Corp	-	*	*
4590	River Forest Community Sch Corp	-	-	*
4600	Merrillville Community School	41	98	158
4615	Lake Central School Corp	11	24	46
4645	Tri-Creek School Corporation	*	*	16
4650	Lake Ridge Schools	15	16	24
4660	Crown Point Community Sch Corp	*	30	56
4670	School City of East Chicago	81	175	294
4680	Lake Station Community Schools	*	*	17
4690	Gary Community School Corp	131	258	607
4700	Griffith Public Schools	18	20	34
4710	School City of Hammond	112	269	546
4720	School Town of Highland	*	*	19
4730	School City of Hobart	*	10	20
4740	School Town of Munster	-	*	*
4760	Whiting School City	*	10	*
4805	New Prairie United School Corp	*	*	*
4860	M S D of New Durham Township	-	*	*
4915	Tri Township Cons School	-	*	*
4925	Michigan City Area Schools	99	162	305
4940	South Central Com School Corp	*	*	*
4945	LaPorte Community School Corp	*	32	41
5075	North Lawrence Com Schools	*	32	58
5085	Mitchell Community Schools	-	*	*
5245	Frankton-Lapel Community Schs	*	*	10
5255	South Madison Com Sch Corp	*	*	10

Appendix A: Choice Scholarship Students by School Corporation of Legal Settlement

Note: Students may not have attended a public school in their corporation of legal settlement prior to participating in the Choice Scholarship Program.

Corp. No.	Corporation Name	2011-2012	2012-2013	2013-2014
5265	Alexandria Com School Corp	*	17	31
5275	Anderson Community School Corp	139	267	504
5280	Elwood Community School Corp	-	*	*
5300	M S D Decatur Township	19	36	60
5310	Franklin Township Com Sch Corp	57	112	201
5330	M S D Lawrence Township	75	186	432
5340	M S D Perry Township	92	210	407
5350	M S D Pike Township	86	198	339
5360	M S D Warren Township	110	205	382
5370	M S D Washington Township	73	158	282
5375	M S D Wayne Township	45	99	207
5380	Beech Grove City Schools	15	32	57
5385	Indianapolis Public Schools	639	1,234	2,657
5400	School Town of Speedway	*	11	11
5455	Culver Community Schools Corp	*	*	*
5470	Argos Community Schools	-	*	-
5480	Bremen Public Schools	*	*	*
5485	Plymouth Community School Corp	*	27	49
5495	Triton School Corporation	*	*	-
5520	Shoals Community School Corp	-	-	-
5525	Loogootee Community Sch Corp	*	*	*
5615	Maconaquah School Corp	*	*	*
5620	North Miami Community Schools	-	-	*
5625	Oak Hill United School Corp	*	*	15
5635	Peru Community Schools	*	*	*
5705	Richland-Bean Blossom C S C	*	*	15
5740	Monroe County Com Sch Corp	11	60	130
5835	North Montgomery Com Sch Corp	-	-	*
5845	South Montgomery Com Sch Corp	-	-	*
5855	Crawfordsville Com Schools	-	-	-
5900	Monroe-Gregg School District	-	*	*
5910	Eminence Community School Corp	-	-	*
5925	M S D Martinsville Schools	-	*	55
5930	Mooreville Con School Corp	*	*	40
5945	North Newton School Corp	*	12	22
5995	South Newton School Corp	*	-	-
6055	Central Noble Com School Corp	-	*	*
6060	East Noble School Corp	12	45	77
6065	West Noble School Corporation	*	-	*
6080	Rising Sun-Ohio Co Com	-	-	-
6145	Orleans Community Schools	-	-	-

Appendix A: Choice Scholarship Students by School Corporation of Legal Settlement				
Note: Students may not have attended a public school in their corporation of legal settlement prior to participating in the Choice Scholarship Program.				
Corp. No.	Corporation Name	2011-2012	2012-2013	2013-2014
6155	Paoli Community School Corp	-	-	*
6160	Springs Valley Com School Corp	-	-	-
6195	Spencer-Owen Community Schools	-	*	*
6260	Southwest Parke Com Sch Corp	-	-	-
6300	Rockville Community School Corp	-	-	N/A
6310	Turkey Run Community Sch Corp	-	-	N/A
6325	Perry Central Com Schools Corp	*	-	*
6340	Cannelton City Schools	-	-	-
6350	Tell City-Troy Twp School Corp	-	-	-
6375	North Central Parke Com School Corp	N/A	-	-
6445	Pike County School Corp	*	-	*
6460	M S D Boone Township	*	*	*
6470	Duneland School Corporation	*	*	12
6510	East Porter County School Corp	*	*	11
6520	Porter Township School Corp	*	*	*
6530	Union Township School Corp	-	*	*
6550	Portage Township Schools	13	29	66
6560	Valparaiso Community Schools	*	18	45
6590	M S D Mount Vernon	*	13	38
6600	M S D North Posey Co Schools	*	*	*
6620	Eastern Pulaski Com Sch Corp	-	-	-
6630	West Central School Corp	-	-	*
6705	South Putnam Community Schools	-	-	-
6715	North Putnam Community Schools	-	-	*
6750	Cloverdale Community Schools	-	-	-
6755	Greencastle Community Sch Corp	*	-	-
6795	Union School Corporation	-	*	*
6805	Randolph Southern School Corp	-	-	*
6820	Monroe Central School Corp	-	*	-
6825	Randolph Central School Corp	-	*	-
6835	Randolph Eastern School Corp	-	-	-
6865	South Ripley Com Sch Corp	-	-	*
6895	Batesville Community Sch Corp	-	*	51
6900	Jac-Cen-Del Community Sch Corp	-	-	*
6910	Milan Community Schools	-	*	*
6995	Rush County Schools	*	17	43
7150	John Glenn School Corporation	*	*	16
7175	Penn-Harris-Madison Sch Corp	22	61	137
7200	School City of Mishawaka	21	70	141
7205	South Bend Community Sch Corp	371	723	1,570
7215	Union-North United School Corp	-	*	*

Appendix A: Choice Scholarship Students by School Corporation of Legal Settlement

Note: Students may not have attended a public school in their corporation of legal settlement prior to participating in the Choice Scholarship Program.

Corp. No.	Corporation Name	2011-2012	2012-2013	2013-2014
7230	Scott County School District 1	*	*	*
7255	Scott County School District 2	10	29	42
7285	Shelby Eastern Schools	*	*	*
7350	Northwestern Con School Corp	*	*	*
7360	Southwestern Con Sch Shelby Co	-	*	*
7365	Shelbyville Central Schools	*	16	33
7385	North Spencer County Sch Corp	*	15	14
7445	South Spencer County Sch Corp	12	14	33
7495	Oregon-Davis School Corp	-	-	*
7515	North Judson-San Pierre Sch Corp	*	*	*
7525	Knox Community School Corp	-	-	-
7605	Fremont Community Schools	-	-	-
7610	Hamilton Community Schools	-	*	*
7615	M S D Steuben County	*	*	*
7645	Northeast School Corp	-	-	*
7715	Southwest School Corp	*	-	-
7775	Switzerland County School Corp	-	*	*
7855	Lafayette School Corporation	28	108	261
7865	Tippecanoe School Corp	26	68	128
7875	West Lafayette Com School Corp	-	*	*
7935	Tri-Central Community Schools	*	*	*
7945	Tipton Community School Corp	*	*	18
7950	Union Co/Clg Corner Joint Sch Dist	*	*	*
7995	Evansville Vanderburgh Sch Corp	120	333	920
8010	North Vermillion Com Sch Corp	-	*	*
8020	South Vermillion Com Sch Corp	*	-	-
8030	Vigo County School Corp	27	53	106
8045	Manchester Community Schools	*	*	*
8050	M S D Wabash County Schools	*	*	*
8060	Wabash City Schools	*	*	11
8115	M S D Warren County	*	*	*
8130	Warrick County School Corp	*	20	71
8205	Salem Community Schools	*	-	-
8215	East Washington School Corp	*	*	*
8220	West Washington School Corp	-	-	-
8305	Nettle Creek School Corp	-	-	-
8355	Western Wayne Schools	*	*	*
8360	Centerville-Abington Com Schs	*	*	13
8375	Northeastern Wayne Schools	*	-	*
8385	Richmond Community Schools	22	80	161
8425	Southern Wells Com Schools	-	-	-

Appendix A: Choice Scholarship Students by School Corporation of Legal Settlement				
Note: Students may not have attended a public school in their corporation of legal settlement prior to participating in the Choice Scholarship Program.				
Corp. No.	Corporation Name	2011-2012	2012-2013	2013-2014
8435	Northern Wells Com Schools	*	*	19
8445	M S D Bluffton-Harrison	-	*	*
8515	North White School Corp	-	-	-
8525	Frontier School Corporation	*	-	-
8535	Tri-County School Corp	-	-	*
8565	Twin Lakes School Corp	-	*	*
8625	Smith-Green Community Schools	*	*	*
8665	Whitley Co Cons Schools	*	16	14
* Counts of less than 10 have been asterisked to comply with FERPA.				

APPENDIX B: CHOICE SCHOLARSHIP STUDENT COUNT BY CHOICE SCHOOL

Appendix B: Choice Scholarship Students By Choice School				
School #	School Name	2011-2012	2012-2013	2013-2014
A035	Saint Joseph School	*	35	106
A040	St Peter Immanuel Lutheran Sch	#N/A	*	10
A104	St Joseph-St Elizabeth Campus 2	*	31	88
A120	Bishop Dwenger High School	22	43	145
A125	Bishop Luers High School	58	109	200
A130	Most Precious Blood School	17	40	113
A135	Queen Of Angels School	19	67	110
A145	Saint Charles Borromeo School	24	91	233
A150	Saint John The Baptist School	20	50	144
A155	St Joseph - St Elizabeth Campus 1	*	20	54
A160	Saint Jude Elementary School	28	86	207
A170	Blackhawk Christian Jr-Sr High Sch	13	41	79
A172	Blackhawk Christian Elem Sch	31	71	137
A175	Saint Therese School	32	51	103
A180	Saint Vincent DePaul School	*	51	158
A195	Concordia Lutheran High School	21	45	87
A200	Suburban Bethlehem Lutheran Sch	#N/A	23	44
A205	Concordia Evangelical Lutheran Sch	#N/A	42	83
A215	Emmanuel St Michael Lutheran Sch	#N/A	21	76
A220	Emmaus Lutheran School	16	36	50
A225	Holy Cross Lutheran School	#N/A	38	99
A235	Lutheran South Unity School	19	50	125
A236	Cornerstone College Prep Sch	92	114	88
A245	Saint Paul Lutheran School	12	41	83
A248	Ascension Lutheran Sch	*	*	32
A249	Central Christian School	11	44	78
A250	Saint Peter's Lutheran School	#N/A	19	74
A260	Aboite Christian School	#N/A	#N/A	*
A270	Saint Aloysius Catholic School	*	16	50
A302	Horizon Christian Academy 2	#N/A	#N/A	115
A307	Horizon Christian Academy 3	#N/A	17	186
A309	Horizon Christian Academy	22	46	118
A340	Saint Joseph Catholic School	12	*	18
A350	St Joseph Hessen Cassel Cath Sch	*	14	26
A355	Saint John The Baptist Catholic Sc	*	34	119
A360	Saint Louis Besancon Catholic Sch	*	16	39
A365	St John-Emmanuel Lutheran School	#N/A	#N/A	*
A375	Woodburn Lutheran School	*	26	60
A405	North Star Montessori School	#N/A	#N/A	*
A425	St Bartholomew School	#N/A	*	37

Appendix B: Choice Scholarship Students By Choice School				
School #	School Name	2011-2012	2012-2013	2013-2014
A435	Saint Peter Lutheran School	*	*	*
A450	Columbus Christian School Inc	30	56	100
A470	Sacred Heart School	#N/A	*	18
A479	ClearView Education Inc	#N/A	*	#N/A
A515	All Saints Catholic School	*	19	55
A550	Saint Paul School	#N/A	*	14
A560	Saint Anthony School	10	22	69
A570	Sacred Heart School	18	42	77
A575	Our Lady Of Providence High Sch	*	15	33
A660	Washington Catholic Mid/High Sch	16	32	49
A665	Washington Catholic Elem School	22	54	102
A685	Saint Paul Catholic School	#N/A	*	19
A690	Saint Mary School	*	19	31
A700	Saint Lawrence School	#N/A	*	*
A724	Good Shepherd Christian Academy	*	*	18
A730	Saint Mary School	#N/A	*	*
A735	Saint Joseph School	*	13	27
A740	Lakewood Park Christian Sch	26	65	143
A746	Heritage Hall Christian School	#N/A	30	65
A790	Saint Lawrence School	*	15	29
A795	Saint Mary School	11	15	29
A865	Holy Family School	*	14	26
A870	Precious Blood School	*	*	15
A875	Clinton Christian School	#N/A	16	36
A975	St Thomas The Apostle School	13	33	69
A980	St Vincent DePaul School	23	58	92
A990	Elkhart Christian Academy	22	71	122
B009	Crossing Educational Center	#N/A	#N/A	39
B015	Bethany Christian Sch	28	62	116
B020	St John Evangelist School	*	21	53
B035	St Gabriel Parochial School	*	*	28
B045	Christian Academy of Indiana	17	46	103
B050	Holy Family School	*	*	22
B060	Our Lady Of Perpetual School	12	18	45
B065	Saint Mary's Catholic School	*	11	#N/A
B067	St Mary of-the-Knobs Catholic Sch	#N/A	*	*
B085	Covington Christian School	*	15	28
B095	Saint Michael School	*	*	18
B105	St Joseph School	*	*	36
B115	Holy Cross School	#N/A	*	*
B120	Saint James School	#N/A	*	27
B125	Sts Peter & Paul School	#N/A	#N/A	*
B136	The King's Academy	*	27	71

Appendix B: Choice Scholarship Students By Choice School				
School #	School Name	2011-2012	2012-2013	2013-2014
B145	Lakeview Christian School Inc	48	99	157
B155	Saint Paul Parish School	*	23	52
B160	Eman Schools	*	38	79
B161	Fishers Christian Academy	#N/A	#N/A	*
B167	Paddock View Residential Center	20	26	27
B190	Indiana Academy	#N/A	#N/A	18
B195	Cicero Adventist School	#N/A	*	*
B241	University High School of Indiana	*	*	*
B246	Our Lady of Grace School	*	20	41
B248	Legacy Christian School	#N/A	#N/A	*
B249	Guerin Catholic High School	*	12	16
B265	Saint Michael School	*	*	41
B275	Saint John Lutheran School	#N/A	#N/A	12
B280	Saint Joseph School	#N/A	*	16
B285	Saint Malachy School	*	23	57
B290	Bethesda Christian School	*	14	37
B293	Todd Academy Inc	#N/A	*	16
B295	Kingsway Christian School	*	38	95
B297	The Oaks Academy - Brookside	#N/A	*	45
B300	Saint Susanna School	*	17	46
B367	Redeemer Lutheran School	*	*	12
B395	Sts Joan of Arc & Patrick School	*	22	80
B418	Huntington Catholic School	17	24	53
B440	Saint Ambrose School	*	*	27
B452	Trinity Lutheran High School	#N/A	#N/A	*
B455	Seymour Christian Academy	#N/A	#N/A	31
B469	Covenant Christian High School	*	*	19
B470	DeMotte Christian Sch	11	39	87
B475	Saint Augustine School	*	13	24
B483	Jay County Christian Academy	18	31	57
B493	Christian Academy of Madison	*	49	75
B505	Shawe Memorial High School	*	*	27
B510	Pope John XXIII School	*	27	82
B515	Saint Mary School	*	17	53
B518	St Rose of Lima Sch	*	25	59
B535	Our Lady Of Greenwood School	11	46	105
B540	SS Francis and Clare Catholic Schl	*	27	61
B560	Rivet Middle & High School	*	*	19
B565	Flaget Elementary School	*	21	47
B595	Lakeland Christian Academy	*	15	18
B600	Warsaw Christian School	#N/A	11	49
B605	Sacred Heart School	*	17	38
B725	Howe School	*	*	*

Appendix B: Choice Scholarship Students By Choice School				
School #	School Name	2011-2012	2012-2013	2013-2014
B747	Midwest Elite Prep Acad Inc	#N/A	#N/A	58
B748	Faith Academy	#N/A	14	43
B755	Aquinas School at St Andrew's	11	31	43
B760	Andrean High School	41	61	114
B764	Avicenna Academy	#N/A	*	11
B775	Saint Michael School	*	*	16
B780	Saint John Evangelist School	#N/A	*	12
B790	Hammond Baptist Elem & High Sch	#N/A	*	#N/A
B800	Saint Edward School	*	#N/A	#N/A
B806	Ambassador Christian Academy	110	156	257
B815	Calumet Christian School	#N/A	#N/A	25
B835	Saint Mary Catholic Comm School	20	38	78
B850	Trinity Lutheran School	*	17	26
B865	St Stanislaus School	72	114	170
B901	Trinity Educational Daycare & Acad	#N/A	37	69
B928	Spirit of God Accelerated School	#N/A	*	63
B930	Saint Mary School	23	56	100
B950	Saint Casimir School	35	91	202
B960	Saint John Bosco School	36	83	138
B965	Saint John The Baptist School	12	18	66
B970	Bishop Noll Institute	40	94	134
B985	City Baptist Schools	#N/A	16	#N/A
C020	Highland Christian School	#N/A	#N/A	62
C025	Our Lady Of Grace School	14	38	69
C040	Saint Bridget School	*	#N/A	#N/A
C050	Trinity Lutheran School	10	23	18
C060	Saint Thomas More School	*	15	26
C065	St Paul's Lutheran School	#N/A	*	18
C105	Notre Dame Elementary School	11	11	36
C110	Queen Of All Saints School	38	45	83
C112	Door Prairie Adventist School	#N/A	24	21
C120	Saint Stanislaus Kostka School	32	51	89
C125	Marquette Catholic High School	17	41	68
C130	Saint Paul Lutheran School	#N/A	13	38
C145	Saint Joseph School	*	#N/A	#N/A
C150	Saint John Lutheran School	*	*	16
C160	Saint Vincent DePaul School	*	37	63
C175	Indiana Christian Academy	#N/A	26	96
C190	Saint Mary School	*	10	29
C205	Saint Ambrose School	13	22	42
C210	Saint Mary School	16	44	105
C223	Delaware Christian Academy	#N/A	#N/A	*
C224	Liberty Christian Sch (7-8)	24	33	39

Appendix B: Choice Scholarship Students By Choice School				
School #	School Name	2011-2012	2012-2013	2013-2014
C225	Liberty Christian School	23	31	50
C226	Liberty Christian Elementary	73	114	166
C250	Anderson Christian School	#N/A	12	30
C265	Nativity School	14	23	36
C267	Holy Cross Lutheran School	*	*	*
C270	Lutheran High School	15	27	44
C275	Heritage Christian School	34	63	109
C280	Saint Lawrence School	43	92	177
C281	Cornerstone Baptist Academy	#N/A	#N/A	65
C282	Horizon Christian School	17	45	88
C295	Saint Barnabas School	*	13	41
C300	Saint Jude Elementary School	*	18	56
C305	Saint Mark School	27	47	81
C310	Saint Roch School	16	26	54
C315	Calvary Lutheran School	20	40	80
C320	Roncalli High School	22	51	119
C349	Southport Presbyterian Chrst Sch	*	13	18
C360	Brebeuf Jesuit Preparatory School	11	15	33
C375	Traders Point Christian Academy	15	48	95
C390	Holy Spirit School	80	126	185
C395	Trinity Lutheran School	24	45	82
C400	Saint John Ev Lutheran School	11	16	29
C435	Saint Luke School	*	10	41
C440	Saint Matthew School	*	30	52
C445	Saint Monica School	37	59	133
C450	Saint Pius X School	*	*	22
C455	Indianapolis Junior Academy	45	69	51
C475	Hasten Hebrew Acad Of Indianapolis	#N/A	*	22
C495	Colonial Christian School	#N/A	#N/A	21
C512	Our Shepherd Lutheran School	*	16	24
C514	Crosspointe Christian Academy	#N/A	#N/A	23
C527	Covenant Christian High School	21	36	36
C545	Holy Name School	12	32	79
C561	Trinity Christian School	57	86	190
C563	Horizon Chrstn Sch-Shepherd Campus	#N/A	18	78
C575	Baptist Academy	41	82	126
C580	Calvary Christian School	32	56	109
C585	Christ The King School	15	31	61
C589	The Independence Academy	#N/A	*	10
C590	Holy Angels Catholic Sch	22	76	115
C595	Holy Cross Central School	50	90	192
C600	Immaculate Heart of Mary School	#N/A	*	*
C605	Our Lady Of Lourdes School	23	39	83

Appendix B: Choice Scholarship Students By Choice School				
School #	School Name	2011-2012	2012-2013	2013-2014
C623	Providence Cristo Rey High School	65	105	159
C625	Central Catholic School	44	77	146
C628	MTI School of Knowledge	70	123	184
C645	Saint Joan Of Arc School	40	68	109
C650	St Michael The Archangel School	61	122	214
C655	Saint Philip Neri School	46	76	177
C665	Saint Simon The Apostle School	*	11	12
C670	St Therese Little Flower School	53	94	158
C675	Saint Thomas Aquinas School	*	*	25
C680	Emmaus Lutheran School	*	*	15
C690	Capitol City SDA Church School	*	25	47
C699	TP Schools	#N/A	29	121
C700	Cathedral High School	18	48	126
C705	Bishop Chatard High School	19	45	95
C710	Scecina Memorial School	40	85	204
C715	Cardinal Ritter High School	61	111	211
C773	The Oaks Academy	#N/A	85	165
C791	Project Libertas	#N/A	#N/A	45
C795	Saint Christopher School	*	21	59
C855	Saint Michael School	*	33	56
C899	Pinnacle School	11	30	67
C900	Saint Charles Boromeo School	#N/A	15	25
C918	The Prep School	#N/A	#N/A	15
C927	Lighthouse Christian Academy	*	22	41
C933	Clear Creek Christian School	*	13	24
C940	Tabernacle Christian Schools	#N/A	#N/A	47
C965	Mooresville Christian Academy	*	*	48
C966	Greenwood Christian Academy	20	39	85
C980	Saint Mary Elementary School	*	10	24
C985	St John Lutheran School	10	27	51
D050	Saint Patrick School	*	#N/A	#N/A
D065	Nativity of Our Savior School	*	23	46
D073	Victory Christian Academy	25	47	90
D080	Portage Christian School	#N/A	#N/A	49
D095	St Matthew School	#N/A	*	14
D100	St Philip School	*	*	23
D105	Saint Wendel School	*	#N/A	*
D130	Saint Louis School	#N/A	10	52
D135	Oldenburg Academy	*	10	13
D140	Saint Mary Elementary School	*	17	43
D158	North Liberty Christian School	#N/A	*	11
D164	St Pius X Catholic School	*	23	55
D165	Marian High School	41	65	140

Appendix B: Choice Scholarship Students By Choice School				
School #	School Name	2011-2012	2012-2013	2013-2014
D177	Mishawaka Catholic School	18	50	116
D189	Covenant Christian Sch	*	21	48
D195	South Bend Hebrew Day School	#N/A	10	44
D198	Queen of Peace School	*	25	56
D217	Trinity School At Greenlawn	#N/A	23	29
D225	Saint Joseph's High School	13	32	87
D230	Christ The King School	*	17	46
D235	Corpus Christi School	*	13	42
D240	Holy Cross School	43	81	180
D245	Holy Family School	35	58	105
D249	New Vision Christian Academy	#N/A	*	18
D250	Our Lady Of Hungary School	65	111	150
D255	Saint Adalbert School	46	86	160
D260	Saint Anthony De Padua School	32	47	91
D265	Saint John The Baptist School	27	51	70
D270	Saint Joseph School	*	*	36
D275	Saint Jude Catholic School	17	37	72
D285	Saint Matthew Cathedral School	32	69	197
D300	South Bend Jr Academy School	*	*	13
D305	Community Baptist Christian Sch	#N/A	#N/A	53
D310	Granger Christian School	*	23	39
D315	Michiana Christian School	#N/A	*	20
D329	Grace Christian Academy Inc	11	33	50
D335	Saint Joseph School	*	17	32
D370	St Bernard School	21	29	48
D375	Saint Peter Lutheran School	*	*	11
D415	Central Catholic Jr-Sr High Sch	*	17	51
D420	Saint Boniface School	*	13	38
D425	Saint Lawrence Elementary School	*	21	48
D430	Saint Mary Cathedral School	10	35	68
D435	Saint James Lutheran School	*	16	36
D440	Lafayette Christian School	#N/A	25	68
D452	Faith Christian School	20	68	119
D458	Tippecanoe Christian School	*	#N/A	#N/A
D465	Saint John The Baptist School	*	12	25
D485	Evansville Christian School	10	53	167
D525	Evansville Day School	*	*	*
D526	Evansville Day School PK-08	*	11	18
D530	Mater Dei High School	*	12	27
D535	Reitz Memorial High School	13	30	47
D545	Christ The King School	*	16	39
D550	Corpus Christi School	#N/A	*	13
D555	Good Shepherd School	*	13	54

Appendix B: Choice Scholarship Students By Choice School				
School #	School Name	2011-2012	2012-2013	2013-2014
D560	Holy Redeemer School	11	26	43
D565	Holy Rosary School	*	17	64
D570	Holy Spirit School	25	53	130
D580	Westside Catholic School	*	17	62
D590	St Benedict Cathedral School	*	10	61
D605	Saint Joseph School	*	*	27
D610	Resurrection School	*	*	39
D615	St Theresa School	16	31	57
D625	Evansville Lutheran School	16	34	90
D720	Saint Patrick School	18	44	99
D722	John Paul II Catholic High Sch	*	*	*
D725	Holy Cross School	*	*	#N/A
D748	Terre Haute SDA School	*	*	12
D805	Saint Bernard Elementary School	*	*	21
D815	Saint John The Baptist School	*	*	35
D840	St Elizabeth Ann Seton E & W	10	51	98
D842	Seton Catholic High School	*	17	39
D860	Richmond Academy	14	17	18
D862	Community Christian Sch	*	12	33
D907	T.R.O.Y. Center	#N/A	12	14
* Counts of less than 10 have been asterisked to comply with FERPA.				
#N/A- School did not participate in the Choice Scholarship Program in the given year.				

APPENDIX C: CHOICE SCHOLARSHIP AWARD AMOUNTS BY CHOICE SCHOOL

Appendix C: Choice Scholarship Award Amounts by Choice School				
School #	School Name	2011-2012	2012-2013	2013-2014
A035	Saint Joseph School	\$ 38,741.46	\$ 116,414.88	\$ 389,397.67
A040	St Peter Immanuel Lutheran Sch	#N/A	\$ 7,650.00	\$ 17,268.00
A104	St Joseph-St Elizabeth Campus 2	\$ 25,332.92	\$ 92,382.70	\$ 284,775.45
A120	Bishop Dwenger High School	\$ 104,852.43	\$ 212,545.64	\$ 687,095.69
A125	Bishop Luers High School	\$ 279,838.07	\$ 574,921.08	\$ 1,072,965.37
A130	Most Precious Blood School	\$ 73,465.22	\$ 160,465.86	\$ 382,702.15
A135	Queen Of Angels School	\$ 80,763.41	\$ 267,294.76	\$ 392,750.91
A145	Saint Charles Borromeo School	\$ 94,343.49	\$ 372,874.25	\$ 974,015.02
A150	Saint John The Baptist School	\$ 90,000.00	\$ 196,643.75	\$ 499,540.79
A155	St Joseph - St Elizabeth Campus 1	\$ 25,482.61	\$ 63,446.53	\$ 142,002.51
A160	Saint Jude Elementary School	\$ 109,574.36	\$ 319,757.99	\$ 659,749.20
A170	Blackhawk Christian Mdl/High Sch	\$ 57,809.20	\$ 172,642.34	\$ 331,955.23
A172	Blackhawk Christian Elem Sch	\$ 122,254.73	\$ 266,992.56	\$ 543,386.70
A175	Saint Therese School	\$ 136,089.34	\$ 186,143.02	\$ 345,282.86
A180	Saint Vincent DePaul School	\$ 24,796.13	\$ 167,912.30	\$ 435,601.52
A195	Concordia Lutheran High School	\$ 101,697.49	\$ 228,618.13	\$ 440,973.26
A200	Suburban Bethlehem Lutheran Sch	#N/A	\$ 54,131.43	\$ 101,405.11
A205	Concordia Evangelical Lutheran Sch	#N/A	\$ 158,532.72	\$ 299,761.40
A215	Emmanuel St Michael Lutheran Sch	#N/A	\$ 78,751.80	\$ 188,186.38
A220	Emmaus Lutheran School	\$ 54,700.00	\$ 147,926.79	\$ 215,823.52
A225	Holy Cross Lutheran School	#N/A	\$ 65,900.00	\$ 170,400.00
A235	Lutheran South Unity School	\$ 77,913.05	\$ 213,157.61	\$ 575,929.55
A236	Cornerstone College Prep Sch	\$ 422,918.12	\$ 527,648.93	\$ 440,147.82
A245	Saint Paul Lutheran School	\$ 48,775.61	\$ 166,131.69	\$ 355,405.63
A248	Ascension Lutheran Sch	\$ 856.00	\$ 4,577.00	\$ 43,851.90
A249	Central Christian School	\$ 39,387.61	\$ 181,726.59	\$ 328,872.26
A250	Saint Peter's Lutheran School	#N/A	\$ 39,715.00	\$ 186,540.00
A260	Aboite Christian School	#N/A	#N/A	\$ 18,000.00
A270	Saint Aloysius Catholic School	\$ 21,285.44	\$ 56,314.27	\$ 185,814.77
A302	Horizon Christian Academy 2	#N/A	#N/A	\$ 537,631.90
A307	Horizon Christian Academy 3	#N/A	\$ 75,060.34	\$ 861,293.55
A309	Horizon Christian Academy	\$ 71,647.83	\$ 201,500.47	\$ 587,289.46
A340	Saint Joseph Catholic School	\$ 54,000.00	\$ 24,055.69	\$ 70,108.01
A350	St Joseph Hessen Cassel Cath Sch	\$ 22,500.00	\$ 47,477.15	\$ 79,478.86
A355	Saint John The Baptist Catholic Sc	\$ 21,476.70	\$ 121,745.14	\$ 435,666.85
A360	Saint Louis Besancon Catholic Sch	\$ 16,158.90	\$ 50,425.50	\$ 154,781.55
A365	St John-Emmanuel Lutheran School	#N/A	#N/A	\$ 16,041.00
A375	Woodburn Lutheran School	\$ 5,317.80	\$ 84,797.07	\$ 243,779.89
A405	North Star Montessori School	#N/A	#N/A	\$ 9,400.00
A425	St Bartholomew School	#N/A	\$ 25,110.00	\$ 116,600.74

Appendix C: Choice Scholarship Award Amounts by Choice School				
School #	School Name	2011-2012	2012-2013	2013-2014
A435	Saint Peter Lutheran School	\$ 25,181.46	\$ 33,230.84	\$ 36,827.43
A450	Columbus Christian School Inc	\$ 129,069.42	\$ 240,417.24	\$ 437,016.37
A470	Sacred Heart School	#N/A	\$ 16,600.00	\$ 50,800.00
A479	ClearView Education Inc	#N/A	\$ 4,479.97	#N/A
A515	All Saints Catholic School	\$ 30,905.00	\$ 79,050.40	\$ 235,478.40
A550	Saint Paul School	#N/A	\$ 2,578.60	\$ 47,818.20
A560	Saint Anthony School	\$ 36,640.78	\$ 88,352.04	\$ 287,997.06
A570	Sacred Heart School	\$ 66,697.06	\$ 152,751.84	\$ 317,230.53
A575	Our Lady Of Providence High Sch	\$ 25,221.34	\$ 65,646.10	\$ 145,840.29
A660	Washington Catholic Mid/High Sch	\$ 44,480.00	\$ 137,137.16	\$ 165,822.33
A665	Washington Catholic Elem School	\$ 60,640.32	\$ 208,044.40	\$ 361,209.71
A685	Saint Paul Catholic School	#N/A	\$ 13,143.54	\$ 37,035.00
A690	Saint Mary School	\$ 9,000.00	\$ 57,172.36	\$ 93,591.20
A700	Saint Lawrence School	#N/A	\$ 4,500.00	\$ 3,161.00
A724	Good Shepherd Christian Academy	\$ 2,805.00	\$ 16,671.35	\$ 52,185.00
A730	Saint Mary School	#N/A	\$ 5,655.00	\$ 22,520.72
A735	Saint Joseph School	\$ 22,500.00	\$ 43,845.34	\$ 88,701.30
A740	Lakewood Park Christian Sch	\$ 96,112.38	\$ 256,781.77	\$ 557,786.08
A746	Heritage Hall Christian School	#N/A	\$ 114,717.78	\$ 267,657.99
A790	Saint Lawrence School	\$ 11,616.00	\$ 27,863.00	\$ 56,573.00
A795	Saint Mary School	\$ 46,000.00	\$ 46,950.00	\$ 73,950.00
A865	Holy Family School	\$ 20,682.73	\$ 38,355.50	\$ 66,175.00
A870	Precious Blood School	\$ 3,264.00	\$ 12,327.00	\$ 32,592.08
A875	Clinton Christian School	#N/A	\$ 66,907.96	\$ 150,622.82
A975	St Thomas The Apostle School	\$ 53,176.44	\$ 118,361.64	\$ 204,031.18
A980	St Vincent DePaul School	\$ 102,036.44	\$ 256,674.96	\$ 402,151.17
A990	Elkhart Christian Academy	\$ 87,575.72	\$ 279,266.20	\$ 522,233.59
B009	Crossing Educational Center	#N/A	#N/A	\$ 202,551.13
B015	Bethany Christian Sch	\$ 107,189.86	\$ 263,725.13	\$ 494,234.26
B020	St John Evangelist School	\$ 34,464.59	\$ 48,088.54	\$ 108,701.73
B035	St Gabriel Parochial School	\$ 11,682.00	\$ 34,073.78	\$ 91,289.67
B045	Christian Academy of Indiana	\$ 70,176.98	\$ 187,613.21	\$ 421,542.44
B050	Holy Family School	\$ 11,702.17	\$ 21,044.41	\$ 81,604.32
B060	Our Lady Of Perpetual School	\$ 33,417.58	\$ 52,928.03	\$ 141,799.13
B065	Saint Mary's Catholic School	\$ 11,244.28	\$ 41,869.19	#N/A
B067	St Mary of-the-Knobs Catholic Sch	#N/A	\$ 9,723.82	\$ 24,782.18
B085	Covington Christian School	\$ 21,950.00	\$ 48,209.12	\$ 101,321.22
B095	Saint Michael School	\$ 11,505.00	\$ 8,217.00	\$ 21,600.00
B105	St Joseph School	\$ 7,458.00	\$ 16,918.93	\$ 75,465.12
B115	Holy Cross School	#N/A	\$ 2,445.00	\$ 8,775.00
B120	Saint James School	#N/A	\$ 5,813.00	\$ 39,487.50
B125	Sts Peter & Paul School	#N/A	#N/A	\$ 3,640.00
B136	The King's Academy	\$ 18,688.20	\$ 92,443.60	\$ 254,896.87

Appendix C: Choice Scholarship Award Amounts by Choice School				
School #	School Name	2011-2012	2012-2013	2013-2014
B145	Lakeview Christian School Inc	\$ 224,614.43	\$ 448,497.93	\$ 717,267.41
B155	Saint Paul Parish School	\$ 18,724.30	\$ 90,780.00	\$ 208,475.85
B160	Eman Schools	\$ 24,948.79	\$ 148,190.35	\$ 343,463.36
B161	Fishers Christian Academy	#N/A	#N/A	\$ 11,761.33
B167	Paddock View Residential Center	\$ 105,963.34	\$ 131,499.91	\$ 138,191.73
B190	Indiana Academy	#N/A	#N/A	\$ 91,708.19
B195	Cicero Adventist School	#N/A	\$ 19,625.00	\$ 40,499.51
B241	University High School of Indiana	\$ 4,389.21	\$ 30,476.66	\$ 32,191.42
B246	Our Lady of Grace School	\$ 16,921.51	\$ 79,746.69	\$ 145,713.49
B248	Legacy Christian School	#N/A	#N/A	\$ 4,700.00
B249	Guerin Catholic High School	\$ 20,837.51	\$ 51,388.51	\$ 63,389.52
B265	Saint Michael School	\$ 25,485.00	\$ 25,300.00	\$ 124,059.39
B275	Saint John Lutheran School	#N/A	#N/A	\$ 24,394.00
B280	Saint Joseph School	#N/A	\$ 3,095.00	\$ 46,963.14
B285	Saint Malachy School	\$ 9,424.87	\$ 71,661.14	\$ 190,159.74
B290	Bethesda Christian School	\$ 22,100.87	\$ 60,671.72	\$ 154,387.37
B293	Todd Academy Inc	#N/A	\$ 26,235.88	\$ 70,859.80
B295	Kingsway Christian School	\$ 31,816.28	\$ 151,807.00	\$ 347,660.78
B297	The Oaks Academy - Brookside	#N/A	\$ 40,500.00	\$ 219,569.55
B300	Saint Susanna School	\$ 26,678.32	\$ 62,506.80	\$ 151,219.62
B367	Redeemer Lutheran School	\$ 3,715.00	\$ 23,621.52	\$ 39,390.81
B395	Sts Joan of Arc & Patrick School	\$ 4,927.55	\$ 56,777.61	\$ 274,409.81
B418	Huntington Catholic School	\$ 70,975.02	\$ 86,665.16	\$ 197,838.08
B440	Saint Ambrose School	\$ 18,467.94	\$ 26,659.00	\$ 74,668.54
B452	Trinity Lutheran High School	#N/A	#N/A	\$ 32,472.22
B455	Seymour Christian Academy	#N/A	#N/A	\$ 77,738.23
B469	Covenant Christian High School	\$ 4,569.49	\$ 12,426.93	\$ 82,651.73
B470	DeMotte Christian Sch	\$ 39,539.98	\$ 152,048.49	\$ 327,184.15
B475	Saint Augustine School	\$ 11,820.00	\$ 38,865.88	\$ 78,776.02
B483	Jay County Christian Academy	\$ 62,298.43	\$ 106,410.14	\$ 264,521.98
B493	Christian Academy of Madison	\$ 28,760.41	\$ 166,991.03	\$ 222,346.81
B505	Shawe Memorial High School	\$ 13,334.05	\$ 30,216.30	\$ 108,215.87
B510	Pope John XXIII School	\$ 7,773.00	\$ 97,411.60	\$ 277,896.16
B515	Saint Mary School	\$ 20,610.00	\$ 54,625.93	\$ 143,354.98
B518	St Rose of Lima Sch	\$ 33,650.98	\$ 101,672.70	\$ 246,675.12
B535	Our Lady Of Greenwood School	\$ 46,305.04	\$ 188,557.35	\$ 436,738.38
B540	SS Francis and Clare Catholic Schl	\$ 20,762.84	\$ 100,804.97	\$ 230,811.99
B560	Rivet Middle & High School	\$ 13,536.29	\$ 17,446.00	\$ 58,248.18
B565	Flaget Elementary School	\$ 11,225.00	\$ 65,436.07	\$ 149,553.94
B595	Lakeland Christian Academy	\$ 30,398.76	\$ 67,427.11	\$ 88,161.90
B600	Warsaw Christian School	#N/A	\$ 44,438.50	\$ 193,676.74
B605	Sacred Heart School	\$ 27,000.00	\$ 53,312.63	\$ 98,236.00
B725	Howe School	\$ 8,728.48	\$ 28,398.76	\$ 43,965.04

Appendix C: Choice Scholarship Award Amounts by Choice School				
School #	School Name	2011-2012	2012-2013	2013-2014
B747	Midwest Elite Prep Acad Inc	#N/A	#N/A	\$ 269,816.58
B748	Faith Academy	#N/A	\$ 58,026.30	\$ 198,300.73
B755	Aquinas School at St Andrew's	\$ 41,082.59	\$ 128,362.27	\$ 184,374.49
B760	Andrean High School	\$ 223,371.76	\$ 330,932.78	\$ 644,151.31
B764	Avicenna Academy	#N/A	\$ 13,444.75	\$ 52,950.00
B775	Saint Michael School	\$ 4,500.00	\$ 7,342.10	\$ 71,375.91
B780	Saint John Evangelist School	#N/A	\$ 18,667.71	\$ 36,459.41
B790	Hammond Baptist Elem & High Sch	#N/A	\$ 26,842.10	#N/A
B800	Saint Edward School	\$ 2,488.46	#N/A	#N/A
B806	Ambassador Christian Academy	\$ 471,628.58	\$ 696,899.15	\$ 1,214,772.15
B815	Calumet Christian School	#N/A	#N/A	\$ 91,924.52
B835	Saint Mary Catholic Comm School	\$ 75,709.19	\$ 144,248.26	\$ 304,300.47
B850	Trinity Lutheran School	\$ 15,850.00	\$ 47,580.57	\$ 84,751.44
B865	St Stanislaus School	\$ 293,992.05	\$ 496,103.96	\$ 744,821.47
B901	Trinity Educational Daycare & Acad	#N/A	\$ 166,500.00	\$ 324,300.00
B928	Spirit of God Accelerated School	#N/A	\$ 27,000.00	\$ 296,100.00
B930	Saint Mary School	\$ 77,000.00	\$ 219,005.59	\$ 420,514.99
B950	Saint Casimir School	\$ 135,995.00	\$ 346,806.57	\$ 771,818.58
B960	Saint John Bosco School	\$ 157,921.77	\$ 356,552.24	\$ 573,625.28
B965	Saint John The Baptist School	\$ 48,925.62	\$ 77,651.47	\$ 283,467.46
B970	Bishop Noll Institute	\$ 223,605.07	\$ 566,924.20	\$ 846,020.00
B985	City Baptist Schools	#N/A	\$ 48,000.00	#N/A
C020	Highland Christian School	#N/A	#N/A	\$ 278,605.03
C025	Our Lady Of Grace School	\$ 58,412.40	\$ 157,560.82	\$ 305,699.69
C040	Saint Bridget School	\$ 6,750.00	#N/A	#N/A
C050	Trinity Lutheran School	\$ 33,150.00	\$ 70,293.00	\$ 63,545.00
C060	Saint Thomas More School	\$ 36,146.00	\$ 58,568.28	\$ 102,525.87
C065	St Paul's Lutheran School	#N/A	\$ 9,000.00	\$ 76,747.02
C105	Notre Dame Elementary School	\$ 45,213.75	\$ 42,889.08	\$ 150,879.74
C110	Queen Of All Saints School	\$ 147,431.25	\$ 185,138.16	\$ 331,533.48
C112	Door Prairie Adventist School	#N/A	\$ 100,961.99	\$ 91,360.14
C120	Saint Stanislaus Kostka School	\$ 93,771.28	\$ 219,514.64	\$ 404,851.03
C125	Marquette Catholic High School	\$ 87,665.43	\$ 210,711.69	\$ 373,800.32
C130	Saint Paul Lutheran School	#N/A	\$ 39,358.50	\$ 137,122.93
C145	Saint Joseph School	\$ 8,983.15	#N/A	#N/A
C150	Saint John Lutheran School	\$ 13,100.00	\$ 30,736.00	\$ 57,221.00
C160	Saint Vincent DePaul School	\$ 8,146.00	\$ 140,789.39	\$ 227,083.66
C175	Indiana Christian Academy	#N/A	\$ 99,603.18	\$ 423,945.32
C190	Saint Mary School	\$ 1,820.00	\$ 18,500.00	\$ 68,150.00
C205	Saint Ambrose School	\$ 38,513.64	\$ 65,658.18	\$ 114,659.97
C210	Saint Mary School	\$ 30,374.58	\$ 95,869.10	\$ 201,205.00
C223	Delaware Christian Academy	#N/A	#N/A	\$ 32,900.00
C224	Liberty Christian Sch (7-8)	\$ 101,826.11	\$ 143,552.72	\$ 171,749.75

Appendix C: Choice Scholarship Award Amounts by Choice School				
School #	School Name	2011-2012	2012-2013	2013-2014
C225	Liberty Christian School	\$ 120,945.92	\$ 152,256.82	\$ 251,971.38
C226	Liberty Christian Elementary	\$ 310,123.37	\$ 493,781.34	\$ 738,722.80
C250	Anderson Christian School	#N/A	\$ 44,841.42	\$ 122,637.55
C265	Nativity School	\$ 37,300.00	\$ 71,098.48	\$ 119,548.94
C267	Holy Cross Lutheran School	\$ 4,500.00	\$ 4,500.00	\$ 29,371.78
C270	Lutheran High School	\$ 69,362.12	\$ 133,252.88	\$ 229,976.49
C275	Heritage Christian School	\$ 137,525.09	\$ 246,979.54	\$ 454,298.28
C280	Saint Lawrence School	\$ 178,852.38	\$ 389,918.21	\$ 783,776.22
C281	Cornerstone Baptist Academy	#N/A	#N/A	\$ 281,636.92
C282	Horizon Christian School	\$ 72,096.34	\$ 191,622.70	\$ 407,030.46
C295	Saint Barnabas School	\$ 26,223.72	\$ 41,893.72	\$ 73,740.17
C300	Saint Jude Elementary School	\$ 28,397.72	\$ 58,652.02	\$ 160,646.65
C305	Saint Mark School	\$ 85,784.87	\$ 174,968.53	\$ 313,314.75
C310	Saint Roch School	\$ 55,089.26	\$ 77,367.22	\$ 164,014.22
C315	Calvary Lutheran School	\$ 83,510.04	\$ 146,923.84	\$ 300,989.17
C320	Roncalli High School	\$ 96,643.13	\$ 222,216.92	\$ 578,571.23
C349	Southport Presbyterian Chrst Sch	\$ 17,080.00	\$ 57,400.00	\$ 77,873.14
C360	Brebeuf Jesuit Preparatory School	\$ 47,008.43	\$ 67,060.66	\$ 134,719.55
C375	Traders Point Christian Academy	\$ 55,589.65	\$ 180,151.93	\$ 384,614.01
C390	Holy Spirit School	\$ 266,407.89	\$ 522,422.79	\$ 815,054.27
C395	Trinity Lutheran School	\$ 96,728.09	\$ 180,325.29	\$ 335,222.52
C400	Saint John Ev Lutheran School	\$ 35,990.64	\$ 44,318.07	\$ 76,813.92
C435	Saint Luke School	\$ 9,000.00	\$ 35,358.92	\$ 138,371.51
C440	Saint Matthew School	\$ 38,574.49	\$ 122,302.66	\$ 216,211.92
C445	Saint Monica School	\$ 138,707.65	\$ 229,336.51	\$ 538,833.97
C450	Saint Pius X School	\$ 2,766.58	\$ 26,649.16	\$ 72,338.98
C455	Indianapolis Junior Academy	\$ 177,550.00	\$ 318,675.78	\$ 244,628.94
C475	Hasten Hebrew Acad Of Indianapolis	#N/A	\$ 25,146.88	\$ 93,638.61
C495	Colonial Christian School	#N/A	#N/A	\$ 77,686.25
C512	Our Shepherd Lutheran School	\$ 35,959.28	\$ 71,677.50	\$ 110,742.29
C514	Crosspointe Christian Academy	#N/A	#N/A	\$ 79,311.49
C527	Covenant Christian High School	\$ 107,629.33	\$ 171,062.68	\$ 158,686.77
C545	Holy Name School	\$ 50,218.02	\$ 115,386.90	\$ 258,472.19
C561	Trinity Christian School	\$ 261,337.16	\$ 403,378.95	\$ 926,857.95
C563	Horizon Chrstn Sch-Shepherd Campus	#N/A	\$ 80,189.53	\$ 394,169.79
C575	Baptist Academy	\$ 173,421.38	\$ 358,247.06	\$ 534,973.59
C580	Calvary Christian School	\$ 105,660.59	\$ 207,698.91	\$ 410,355.02
C585	Christ The King School	\$ 61,363.04	\$ 128,126.85	\$ 224,621.47
C589	The Independence Academy	#N/A	\$ 11,646.88	\$ 40,443.96
C590	Holy Angels Catholic Sch	\$ 93,351.48	\$ 329,674.91	\$ 537,858.70
C595	Holy Cross Central School	\$ 219,631.06	\$ 398,582.77	\$ 913,029.37
C600	Immaculate Heart of Mary School	#N/A	\$ 5,625.54	\$ 25,740.36
C605	Our Lady Of Lourdes School	\$ 96,096.74	\$ 160,687.71	\$ 360,859.79

Appendix C: Choice Scholarship Award Amounts by Choice School				
School #	School Name	2011-2012	2012-2013	2013-2014
C623	Providence Cristo Rey High School	\$ 382,859.33	\$ 614,404.77	\$ 966,075.85
C625	Central Catholic School	\$ 197,276.02	\$ 342,427.45	\$ 678,579.94
C628	MTI School of Knowledge	\$ 310,656.12	\$ 565,635.30	\$ 857,048.27
C645	Saint Joan Of Arc School	\$ 155,713.77	\$ 282,389.95	\$ 446,587.48
C650	St Michael The Archangel School	\$ 258,439.58	\$ 526,354.88	\$ 962,052.14
C655	Saint Philip Neri School	\$ 206,276.02	\$ 341,189.53	\$ 827,015.21
C665	Saint Simon The Apostle School	\$ 9,000.00	\$ 38,893.59	\$ 41,890.31
C670	St Therese Little Flower School	\$ 192,069.76	\$ 417,326.71	\$ 701,389.65
C675	Saint Thomas Aquinas School	\$ 33,394.56	\$ 35,189.53	\$ 115,865.59
C680	Emmaus Lutheran School	\$ 13,500.00	\$ 36,000.00	\$ 70,500.00
C690	Capitol City SDA Church School	\$ 5,670.00	\$ 74,836.57	\$ 208,346.99
C699	TP Schools	#N/A	\$ 91,953.88	\$ 507,396.72
C700	Cathedral High School	\$ 87,158.42	\$ 230,661.83	\$ 662,035.91
C705	Bishop Chatard High School	\$ 103,305.80	\$ 254,938.26	\$ 505,278.54
C710	Scecina Memorial School	\$ 225,673.83	\$ 481,269.41	\$ 1,188,844.62
C715	Cardinal Ritter High School	\$ 315,812.27	\$ 566,777.83	\$ 1,130,703.33
C773	The Oaks Academy	#N/A	\$ 357,633.38	\$ 715,460.75
C791	Project Libertas	#N/A	#N/A	\$ 206,448.61
C795	Saint Christopher School	\$ 31,285.00	\$ 77,549.28	\$ 243,903.02
C855	Saint Michael School	\$ 32,342.12	\$ 126,356.68	\$ 208,098.75
C899	Pinnacle School	\$ 47,870.46	\$ 132,045.81	\$ 306,545.04
C900	Saint Charles Boromeo School	#N/A	\$ 38,022.58	\$ 74,053.73
C918	The Prep School	#N/A	#N/A	\$ 61,990.04
C927	Lighthouse Christian Academy	\$ 27,217.13	\$ 88,135.87	\$ 172,789.49
C933	Clear Creek Christian School	\$ 7,861.89	\$ 43,985.60	\$ 81,439.41
C940	Tabernacle Christian Schools	#N/A	#N/A	\$ 199,987.21
C965	Mooresville Christian Academy	\$ 25,262.42	\$ 28,360.96	\$ 210,987.02
C966	Greenwood Christian Academy	\$ 74,312.02	\$ 156,152.96	\$ 350,650.49
C980	Saint Mary Elementary School	\$ 9,000.00	\$ 31,038.24	\$ 70,570.19
C985	St John Lutheran School	\$ 25,384.53	\$ 80,708.84	\$ 157,205.82
D050	Saint Patrick School	\$ 3,773.00	#N/A	#N/A
D065	Nativity of Our Savior School	\$ 22,742.14	\$ 100,128.72	\$ 200,959.84
D073	Victory Christian Academy	\$ 91,376.83	\$ 176,859.25	\$ 337,586.80
D080	Portage Christian School	#N/A	#N/A	\$ 189,701.41
D095	St Matthew School	#N/A	\$ 7,275.91	\$ 36,676.10
D100	St Philip School	\$ 4,840.00	\$ 18,742.50	\$ 49,085.00
D105	Saint Wendel School	\$ 3,190.00	#N/A	\$ 18,298.22
D130	Saint Louis School	#N/A	\$ 32,479.31	\$ 127,247.64
D135	Oldenburg Academy	\$ 14,649.97	\$ 40,386.63	\$ 59,221.92
D140	Saint Mary Elementary School	\$ 20,930.00	\$ 63,890.56	\$ 191,150.40
D158	North Liberty Christian School	#N/A	\$ 15,250.00	\$ 27,900.00
D164	St Pius X Catholic School	\$ 3,159.91	\$ 82,398.32	\$ 195,860.27
D165	Marian High School	\$ 224,007.56	\$ 336,520.23	\$ 751,616.30

Appendix C: Choice Scholarship Award Amounts by Choice School				
School #	School Name	2011-2012	2012-2013	2013-2014
D177	Mishawaka Catholic School	\$ 73,591.35	\$ 202,244.04	\$ 389,895.76
D189	Covenant Christian Sch	\$ 39,036.44	\$ 89,617.17	\$ 201,734.79
D195	South Bend Hebrew Day School	#N/A	\$ 40,921.20	\$ 194,203.77
D198	Queen of Peace School	\$ 25,030.51	\$ 76,410.70	\$ 158,896.91
D217	Trinity School At Greenlawn	#N/A	\$ 96,529.54	\$ 138,894.08
D225	Saint Joseph High School	\$ 67,627.26	\$ 159,512.03	\$ 437,553.41
D230	Christ The King School	\$ 7,659.91	\$ 64,858.20	\$ 170,485.64
D235	Corpus Christi School	\$ 31,500.00	\$ 50,907.00	\$ 158,857.44
D240	Holy Cross School	\$ 181,315.72	\$ 345,465.60	\$ 794,313.46
D245	Holy Family School	\$ 148,234.19	\$ 246,103.60	\$ 440,776.28
D249	New Vision Christian Academy	#N/A	\$ 9,000.00	\$ 85,400.00
D250	Our Lady Of Hungary School	\$ 290,805.81	\$ 493,871.72	\$ 705,228.32
D255	Saint Adalbert School	\$ 185,012.00	\$ 381,561.60	\$ 746,913.28
D260	Saint Anthony De Padua School	\$ 139,979.73	\$ 185,689.16	\$ 360,667.66
D265	Saint John The Baptist School	\$ 120,143.06	\$ 225,421.20	\$ 318,617.46
D270	Saint Joseph School	\$ 13,979.73	\$ 28,662.00	\$ 109,548.82
D275	Saint Jude Catholic School	\$ 68,459.46	\$ 139,792.80	\$ 263,467.78
D285	Saint Matthew Cathedral School	\$ 138,639.64	\$ 268,742.89	\$ 726,734.33
D300	South Bend Jr Academy School	\$ 36,375.00	\$ 21,750.00	\$ 54,753.32
D305	Community Baptist Christian Sch	#N/A	#N/A	\$ 212,384.89
D310	Granger Christian School	\$ 36,054.91	\$ 96,439.69	\$ 178,835.36
D315	Michiana Christian School	#N/A	\$ 3,140.40	\$ 70,132.48
D329	Grace Christian Academy Inc	\$ 34,256.98	\$ 139,993.15	\$ 236,053.48
D335	Saint Joseph School	\$ 24,500.00	\$ 61,000.00	\$ 119,162.39
D370	St Bernard School	\$ 53,175.12	\$ 71,606.24	\$ 112,532.92
D375	Saint Peter Lutheran School	\$ 2,485.00	\$ 18,900.00	\$ 24,185.00
D415	Central Catholic Jr-Sr High Sch	\$ 13,321.22	\$ 61,003.15	\$ 213,206.22
D420	Saint Boniface School	\$ 31,219.86	\$ 45,240.84	\$ 150,049.18
D425	Saint Lawrence Elementary School	\$ 5,067.86	\$ 61,882.79	\$ 178,947.31
D430	Saint Mary Cathedral School	\$ 32,164.49	\$ 99,811.83	\$ 254,851.40
D435	Saint James Lutheran School	\$ 5,067.86	\$ 35,459.98	\$ 79,905.30
D440	Lafayette Christian School	#N/A	\$ 92,175.55	\$ 270,784.81
D452	Faith Christian School	\$ 81,569.89	\$ 274,404.35	\$ 489,580.63
D458	Tippecanoe Christian School	\$ 30,713.18	#N/A	#N/A
D465	Saint John The Baptist School	\$ 16,232.95	\$ 32,991.01	\$ 62,329.88
D485	Evansville Christian School	\$ 44,898.31	\$ 216,205.02	\$ 690,852.37
D525	Evansville Day School	\$ 2,807.24	\$ 13,597.83	\$ 17,103.86
D526	Evansville Day School PK-08	\$ 10,114.48	\$ 41,164.40	\$ 83,751.93
D530	Mater Dei High School	\$ 28,072.34	\$ 52,125.04	\$ 110,375.39
D535	Reitz Memorial High School	\$ 60,833.97	\$ 112,643.20	\$ 216,050.59
D545	Christ The King School	\$ 17,848.24	\$ 58,942.00	\$ 131,338.01
D550	Corpus Christi School	#N/A	\$ 11,114.00	\$ 32,872.51
D555	Good Shepherd School	\$ 8,747.24	\$ 39,815.76	\$ 184,109.76

Appendix C: Choice Scholarship Award Amounts by Choice School				
School #	School Name	2011-2012	2012-2013	2013-2014
D560	Holy Redeemer School	\$ 46,114.48	\$ 100,663.04	\$ 157,103.32
D565	Holy Rosary School	\$ 15,317.00	\$ 56,596.30	\$ 244,880.50
D570	Holy Spirit School	\$ 78,152.00	\$ 187,813.69	\$ 570,857.54
D580	Westside Catholic School	\$ 13,500.00	\$ 68,164.40	\$ 252,557.12
D590	St Benedict Cathedral School	\$ 16,307.24	\$ 36,567.50	\$ 203,248.26
D605	Saint Joseph School	\$ 2,920.00	\$ 22,702.88	\$ 52,864.08
D610	Resurrection School	\$ 4,040.00	\$ 18,605.00	\$ 112,028.00
D615	St Theresa School	\$ 72,000.00	\$ 139,500.00	\$ 262,761.18
D625	Evansville Lutheran School	\$ 66,921.72	\$ 147,998.64	\$ 350,715.58
D720	Saint Patrick School	\$ 71,504.40	\$ 181,689.62	\$ 349,099.75
D722	John Paul II Catholic High Sch	\$ 3,843.00	\$ 11,144.00	\$ 24,448.00
D725	Holy Cross School	\$ 40,500.00	\$ 18,000.00	#N/A
D748	Terre Haute SDA School	\$ 36,000.00	\$ 31,500.00	\$ 55,400.00
D805	Saint Bernard Elementary School	\$ 9,000.00	\$ 34,453.03	\$ 86,248.96
D815	Saint John The Baptist School	\$ 4,398.31	\$ 34,876.22	\$ 103,485.12
D840	St Elizabeth Ann Seton E & W	\$ 25,999.00	\$ 198,179.38	\$ 407,473.94
D842	Seton Catholic High School	\$ 28,797.41	\$ 67,081.38	\$ 179,298.70
D860	Richmond Academy	\$ 63,500.00	\$ 78,395.76	\$ 64,882.93
D862	Community Christian Sch	\$ 11,384.00	\$ 47,052.82	\$ 126,964.44
D907	T.R.O.Y. Center	#N/A	\$ 54,824.56	\$ 66,741.36
#N/A- School did not participate in the Choice Scholarship Program in the given year.				